

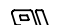


SIGN	DATE	DESCRIPTION	APPROVER
△	06/23'06	UL current rating is changed from 10A to 15A	Marvin
△	06/23'06	CSA Voltage rating is changed from 250V to 300V	Marvin
△	06/23'06	Added TUV logo	Marvin
△	10/06'06	Added VDE logo	Marvin
△	2/6'09	Safety Approval changed	Tony
△	2010.03.27	The design is changed	Jacke

THIS IS CAD DRAWING, DO NOT REVISE MANUALLY!!!

Material

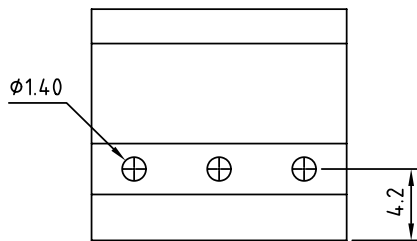
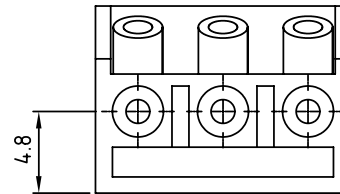
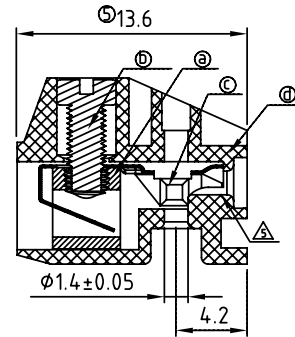
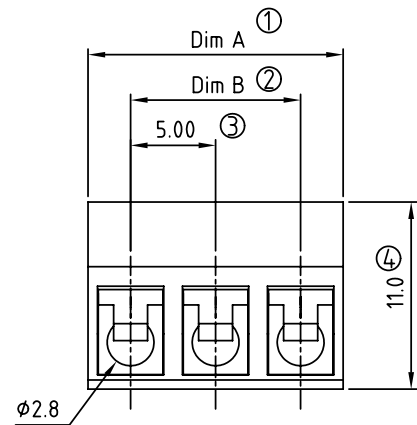
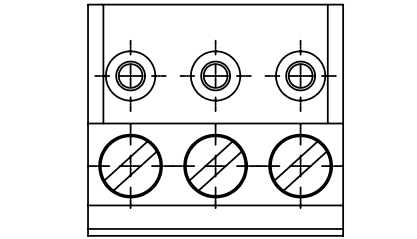
- Item a Clamp: Brass(CuZn) Tin plated
- Item b Terminal screw: Steel Zinc plating "--" slot type
- Item c Female contact :PhBz (CuSn)
- Item d Terminal(housing): Thermoplastic (UL94V-0)

Electrical UL / TUV / VDE

- △ Voltage rating: 300V/300V/300V
- Current rating: 15A/15A/12A
- Wire range: 0.34-1.5mm² / 0.34-1.5mm²
- Solid wire(AWG): 14-22 / 14-22
- Stranded wire(AWG): 14-22 / 14-22
- Torque: 3.5Lb-In / 0.4N.m / 0.4N.m
- Screw: M2.6
- Wire strip length: 5-6mm
- Withstanding Voltage: 1.6KV/2.5KV/2.5KV
- Operating temperature: -40°C to +115°C
- Safety Approval:   

TH xx 01x 1 xxxx G

04	4CONTACTS	0	Black (RAL9005)	000 0	Standard @ Logo	Pb < 40,000ppm
05	5 CONTACTS	2	Red (RAL3001/D)	000 A	Standard ANY Logo	(RoHS)
...	...	3	Orange(RAL2011/P)	Any special item by customer request, please contact sales department.		
24	24 CONTACTS	4	Yellow(RAL1018/A)	5	Green(RAL6018/T)	
		6	Blue (RAL5015/A)			
		8	Grey(RAL7035/D)			



N = Number of poles

Dim A = N x 5.0

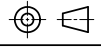
Dim B = (N-1) x 5.0

	Dim A Tolerance	Dim B Tolerance
4-6p	±0.15	±0.15
7-12p	±0.20	±0.20
13-18p	±0.30	±0.30
19-24p	±0.40	±0.40

ANYTEK

CUSTOMER COPY

ALL RIGHTS RESERVED. REPRODUCTION OR ISSUE TO THIRD PARTIES IN ANY FORM WHATSOEVER IS NOT PERMITTED WITHOUT WRITTEN AUTHORITY FROM THE PROPRIETOR. PROPERTY OF ANYTEK TECHNOLOGY CO., LTD

TITLE		TH 5.0mm Solid Block Type Series			
PART NO.		THxx01x1xxxxG		DWG NO.	8TH0101
APPROVED	CHECKED	DESIGNED	DRAWN	CUST NO.	
		Jacke 2010.03.27	Jacke 2010.03.27		
					Tolerance
					UNIT: mm
				SCALE: NONE	X.X ±0.30
				SHEET: 01/01	X.XX ±0.10
				REV.: G	X° ±1°