




| SIGN | DATE       | DESCRIPTION                                     | APPROVER |
|------|------------|---|----------|
| △    | 06/23'06   | UL current rating is changed from 10A to 15A    | Marvin   |
| △    | 06/23'06   | CSA Voltage rating is changed from 250V to 300V | Marvin   |
| △    | 06/23'06   | Added TUV logo                                  | Marvin   |
| △    | 10/06'06   | Added VDE logo                                  | Marvin   |
| △    | 2010.03.27 | The design is changed                           | Jacke    |

*THIS IS CAD DRAWING, DO NOT REVISE MANUALLY!!!*

**Material**

- Item a Clamp: Brass(CuZn) Tin plated
- Item b Terminal screw: Steel Zinc plating "-" slot type
- Item c Female contact :PhBz (CuSn)
- Item d Terminal(housing): Thermoplastic (UL94V-0)

**Electrical UL / TUV / VDE**

- △ ● Voltage rating: 300V/300V/300V
- Current rating: 15A/15A/12A
- Wire range: 0.34-1.5mm<sup>2</sup> / 0.34-1.5mm<sup>2</sup>
- Solid wire(AWG): 14-22 / 14-22
- Stranded wire(AWG): 14-22 / 14-22
- Torque: 3.5Lb-In / 0.4N.m / 0.4N.m
- Screw: M2.6
- Wire strip length: 5-6mm
- Withstanding Voltage: 1.6KV/2.5KV/2.5KV
- Operating temperature: -40°C to +115°C
- △ △ ● Safety Approval:   

**TH xx 01x 0 xxxx G**

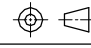
|     |             |   |                   |  |                          |                |
|-----|-------------|---|-------------------|--|--------------------------|----------------|
| 02  | 2 CONTACTS  | 0 | Black (RAL9005)   | 000 0  | Standard @ Logo          | Pb < 40,000ppm |
| 03  | 3 CONTACTS  | 2 | Red (RAL3001/D)   | 000 A  | Standard ANY Logo (RoHS) |                |
| ... | ...         | 3 | Orange(RAL2011/P) | 000 W  | WE Logo                  |                |
| 24  | 24 CONTACTS | 4 | Yellow(RAL1018/A) | Any special item by customer request, please contact sales department. |                          |                |
|     |             | 5 | Green(RAL6018/T)  |  |                          |                |
|     |             | 6 | Blue (RAL5015/A)  |  |                          |                |
|     |             | 8 | Grey(RAL7035/D)   |  |                          |                |

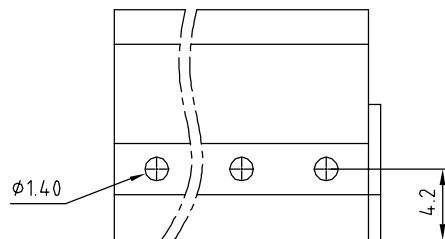
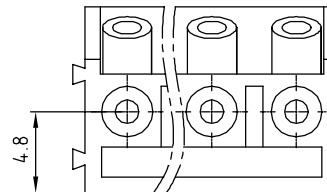
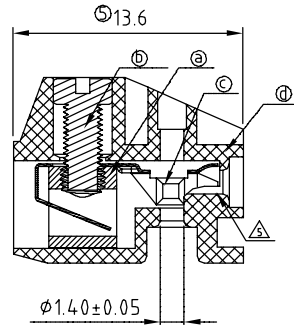
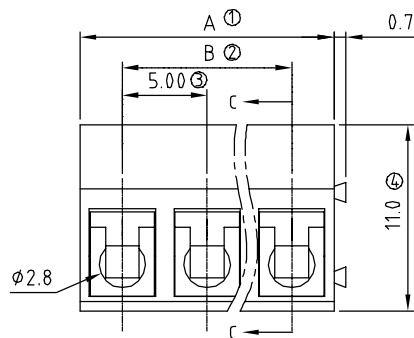
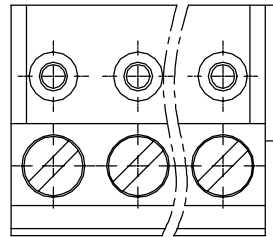
N = Number of poles

Dim A=Nx5.0

Dim B=(N-1)x5.0

|        | Dim A Tolerance | Dim B Tolerance |
|--------|-----------------|-----------------|
| 2-6p   | ±0.15           | ±0.10           |
| 7-12p  | ±0.25           | ±0.15           |
| 13-18p | ±0.30           | ±0.20           |
| 19-24p | ±0.40           | ±0.30           |

|   |  |                                |  |   |         |            |         |
|---|--|--------------------------------|--|---|---------|------------|---------|
| <h1>ANYTEK</h1>   |  |                                |  | <h2>CUSTOMER COPY</h2>  |         |            |         |
| ALL RIGHTS RESERVED. REPRODUCTION OR ISSUE TO THIRD PARTIES IN ANY FORM WHATSOEVER IS NOT PERMITTED WITHOUT WRITTEN AUTHORITY FROM THE PROPRIETOR. PROPERTY OF ANYTEK TECHNOLOGY CO., LTD |  |                                |  |   |         |            |         |
| TITLE   |  | TH-5.0mm series Stackable Type |  |   |         |            |         |
| PART NO.  |  | THxx01x0xxxxG                  |  |   | DWG NO. |            | 8TH0001 |
| APPROVED  |  | CHECKED                        |  | DESIGNED  |         | DRAWN      |         |
|   |  | Jacke<br>2010.03.27            |  | Jacke<br>2010.03.27   |         | CUST NO.   |         |
|   |  |                                |  |  |         | Tolerance  |         |
|   |  |                                |  | UNIT: mm  |         | X. ±0.50   |         |
|   |  |                                |  | SCALE: NONE   |         | X.X ±0.30  |         |
|   |  |                                |  | SHEET: 01/01  |         | X.XX ±0.10 |         |
|   |  |                                |  | REV.: F   |         | X° ±1°     |         |



1 2 3 4 5 6 7

E

D

C

B

A

1 2 3 4 5 6 7