




SIGN	DATE	DESCRIPTION	APPROVER
△	05/12'14	changed the structure of lever ///update the drawing	Da cheng
△			

THIS IS CAD DRAWING, DO NOT REVISE MANUALLY!!!

**Material**

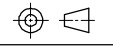
- Item ① Insulating body Thermoplastic ( UL94V-0 )
- Item ② Insulating lever Thermoplastic ( UL94V-0 )
- Item ③ Contact pin Brass, Tin plated
- Item ④ Spring clamp Stainless steel
- Item ⑤ Insulating side body Thermoplastic ( UL94V-0 )
- Item ⑥ Insulating cover Thermoplastic ( UL94V-0 )

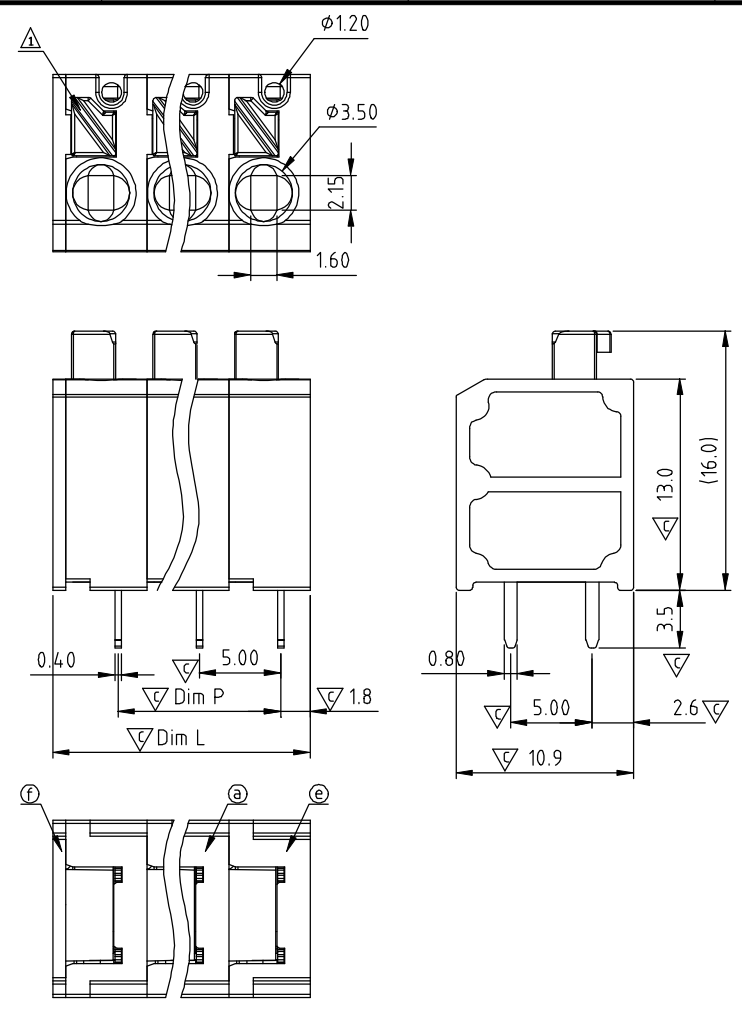
**Electrical**

- |                          |   |   |
|--------------------------|---|---|
|                          | cULus   | VDE   |
| ● Voltage rating:        | 300VAC  | 250VAC  |
| ● Current rating:        | 10A   | 10A   |
| ● Wire range:            |   | 0.5-1.0mm <sup>2</sup>  |
| ● Solid wire(AWG):       | 16-20   |   |
| ● Stranded wire(AWG):    | 16-20   |   |
| ● Wire strip length:     |   | 8-9mm   |
| ● Withstanding Voltage:  | 1.6KV   | 2KV   |
| ● Operating temperature: | -40°C to +115°C   |   |
| ● Soldering temperature: | 260°C±5°C/5 Sec   |   |
| ● Safety Approval:       |  |  |
| ● Critical dimension:    |  |   |

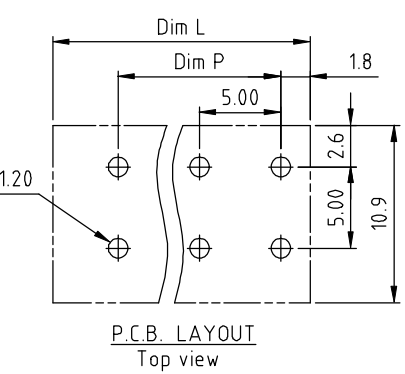
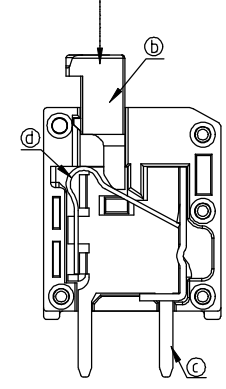
**HF xx 70 x 0 Pxxx G**

- |              |                     |                        |  |
|--------------|---------------------|------------------------|--|
| No. OF POLES | Body Color          | P000 Standard @ Logo   | RoHs compliant (lead<4%) in copper Alloy |
| 01: 1 POLES  | 0 Black (RAL9005)   | P00A Standard ANY Logo |  |
| 02: 2 POLES  | 2 Red (RAL3001/D)   | Any special item by    |  |
| :            | 3 Orange(RAL2011/P) | customer request,      |  |
| 24: 24 POLES | 4 Yellow(RAL1018/A) | please contact sales   |  |
|              | 5 Green(RAL6018/T)  | department.            |  |
|              | 6 Blue (RAL5015/A)  |                        |  |
|              | 8 Grey(RAL7004/P)   |                        |  |
|              | 9 White(RAL1102)    |                        |  |
|              | C Multiple colors   |                        |  |

<b>ANYTEK</b>				<b>CUSTOMER COPY</b>			
ALL RIGHTS RESERVED. REPRODUCTION OR ISSUE TO THIRD PARTIES IN ANY FORM WHATSOEVER IS NOT PERMITTED WITHOUT WRITTEN AUTHORITY FROM THE PROPRIETOR. PROPERTY OF ANYTEK TECHNOLOGY CO., LTD							
TITLE	HF-5.0mm Series (低背拼插式)						
PART NO.	HFxx70x0PxxxG			DWG NO.	8HF0P01		
APPROVED	CHECKED	DESIGNED	DRAWN	CUST NO.	Tolerance		
		Da cheng	Da cheng		UNIT: mm	X.	±0.50
		2014.05.12	2014.05.12		SCALE: NONE	X.X	±0.30
					REV.: C	X.XX	±0.10
				SHEET: 01/01	X° ±1°		



The color of lever is consistent with body's



N=NUMBER OF POLES

Dim L	N×5.0+0.80
Dim P	(N-1)×5.0

POLES	Dim L	Dim P
1p	±0.1	
2p-6p	±0.15	±0.15
7p-12p	±0.2	±0.2
13p-18p	±0.3	±0.3
19p-24p	±0.4	±0.4