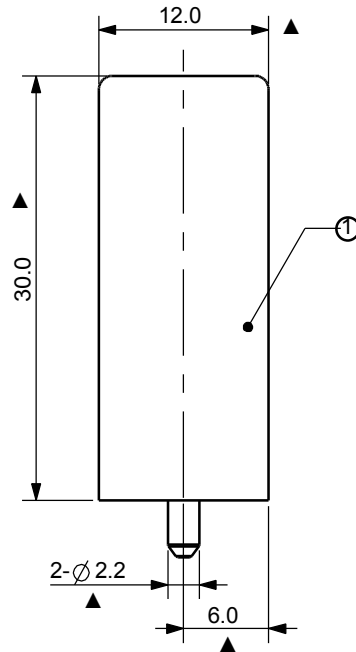
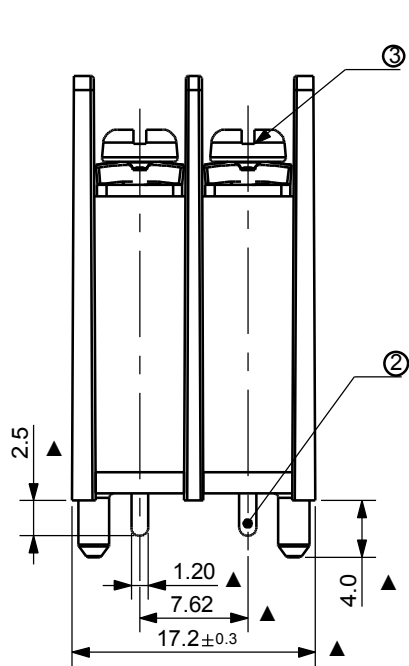
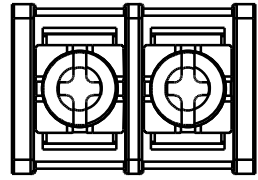
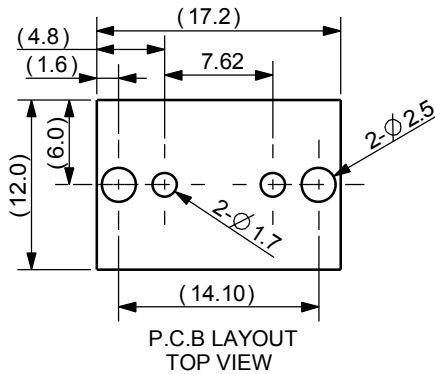
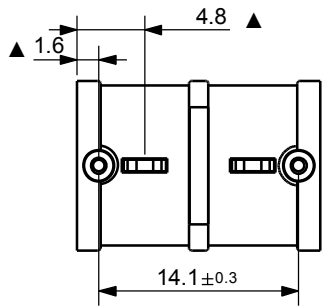


Rev.	SIGN	DATE	DESCRIPTION	APPROVER
B		2017.08.09	The first release	Guoxue
<b>THIS IS CREO DRAWING, DO NOT REVISE MANUALLY!!!</b>				



MATERIALS ELECTRICAL  
 RATED VOLTAGE&CURRENT: 300V,15A  
 WITHSTAND VOLTAGE: AC 2000V/Min  
 INSULATION RESSTANCE: 1000M ΩOR MORE AT DC 500V  
 OPERAING TEMPERATURE RANGE: -40°C - +115°C  
 SCREW TORQUE VALUE: 5.2Lb-In  
 WIRE RANGE: 14-22 AWG  
 1)MOLDED PARTS: THERMOPLASTIC,UL 94 V-0 BLACK  
 2)TERMINAL: BRASS 0.8T,Tin PLATED  
 3)TERMINAL SCREWS: STEEL ,Zinc plated M3  
 APPROVAL:  
 Critical dimension: ▲



文件路径:  
 3D:\192.168.16.223\r&d\研发图面\欧美规端子台3DIY系列\YK系列\YK30系列\YK304 加高型\asmYK304.asm  
 2D: 3D:\192.168.16.223\r&d\研发图面\欧美规端子台3DIY系列\YK系列\YK30系列\YK304 加高型\8YK0005-304.drw B版

<b>Amphenol ANYTEK</b>		<b>CUSTOMER COPY</b>		
ALL RIGHTS RESERVED. REPRODUCTION OR ISSUE TO THIRD PARTIES IN ANY FORM WHATEVER IS NOT PERMITTED WITHOUT WRITTEN AUTHORITY FROM THE PROPRIETOR. PROPERTY OF ANYTEK TECHNOLOGY CO., LTD				
TITLE:	YK-304 2P 加高型 Series			
PART NO.:	YK3040203001G/YK3040203101G	DWG NO.:	8YK0005-304	
APPROVED	CHECKED	DESIGNED	DRAWN	CUST NO.
		Guoxue	Guoxue	
		2017.08.09	2017.08.09	
				Tolerance X. ±0.5 X.X ±0.3 X.XX ±0.1 X° ±1°
		SHEET:1 / 1		UNIT mm SCALE 2:1 REV.: B