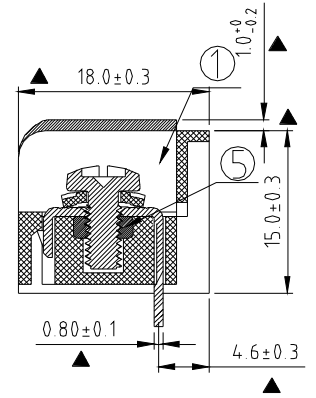
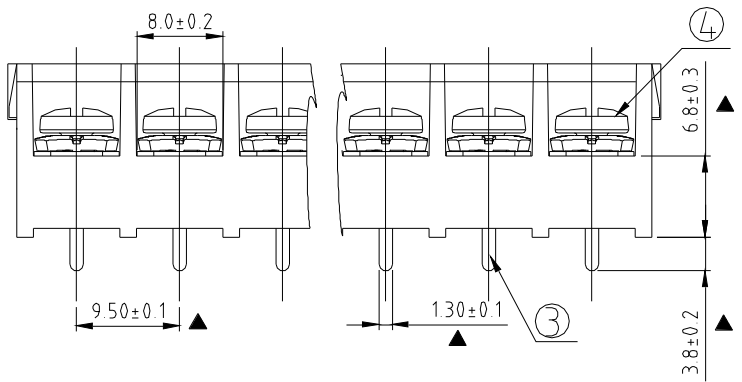
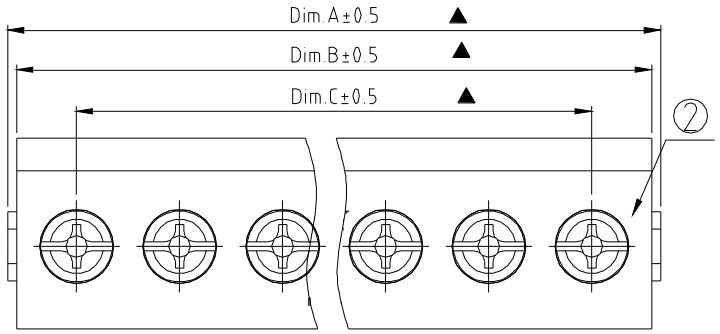


| Rev | SIGN | DATE | DESCRIPTION | APPROVER |
|-----|------|------------|-------------------|----------|
| B | — | 2017.09.05 | The first release | Guoxue |

THIS IS CAD DRAWING, DO NOT REVISE MANUALLY!!!



MATERIALS ELECTRICAL: cULus / TUV
 RATED VOLTAGE & CURRENT: 300 V, 20A / 300V , 32A
 WITHSTAND VOLTAGE: AC 2000 V/Min
 INSULATION RESISTANCE: 2000 MΩ OR MORE AT DC 500 V
 OPERATING TEMPERATURE RANG: -40 °C ~ +105 °C
 SOLDERING TEMPERATURE: 260°C±5°C/5 Sec
 SCREW TORQUE VALUE: 12.0Lb-In /137N.m
 WIRE RANGE: 22-12 AWG ; /0.34mm² -4.0mm²

1) MOLDED PARTS: Thermoplastic, UL 94 V-0 BLACK
 2) COVER: PC (Separate packed)
 3) TERMINAL: BRASS, 0.8t, Tin Plated
 4) TERMINAL SCREWS: STEEL, M3.5
 5) TERMINAL NUT: STEEL M3.5

APPROVAL: **critical dimension:** ▲

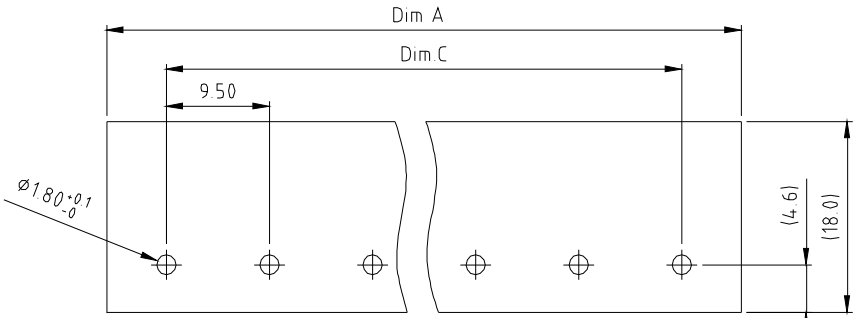
YK 44B xx 2 x x 00G

NO. OF POLES: 02: 2 POLES, 03: 3 POLES, 04: 4 POLES, ..., 12: 12 POLES

MARK: 0: "@ " MAK, 1: "ANY" MAK

TERMINAL & SCREW PLATED: 0: TERMINAL & SCREW: G/F, 1: TERMINAL: G/F, SCREW: Zinc, 2: TERMINAL: Sn, SCREW: G/F, 3: TERMINAL: Sn, SCREW: Zinc

G-RoHS compliant (lead < 4%) in copper alloy



PCB Layout
BOTTOM VIEW

N = Number of poles (2P-12P)
 Dim A = N x 9.5 + 2.7
 Dim B = N x 9.5 + 1.2
 Dim C = (N-1) x 9.5

| | | | | | |
|--|---|----------------------|----------------------|----------------------|---|
| Amphenol ANYTEK | | | | CUSTOMER COPY | |
| ALL RIGHTS RESERVED. REPRODUCTION OR ISSUE TO THIRD PARTIES IN ANY FORM WHATSOEVER IS NOT PERMITTED WITHOUT WRITTEN AUTHORITY FROM THE PROPRIETOR. PROPERTY OF ANYTEK TECHNOLOGY CO., LTD. | | | | | |
| TITLE | YK44B Series (The cover is Separate packed) | | | | |
| PART NO. | YK44Bxx2xx00G | | DWG NO. | 8YK0001-44B | |
| APPROVED | CHECKED | DESIGNED | DRAWN | CUST NO. | Tolerance |
| | | Guoxue 2017.09.05 | Guoxue 2017.09.05 | | X. ±0.50 X.X ±0.30 X.XX ±0.10 X° ±1° |
| | | | | SHEET: 01/01 | REV: B |