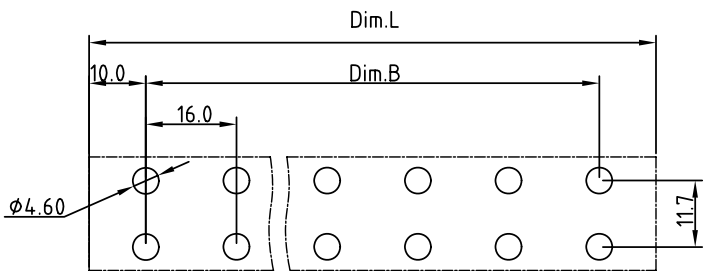
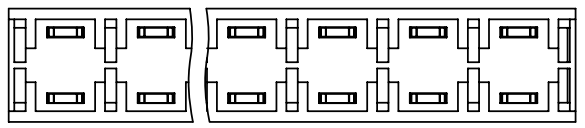
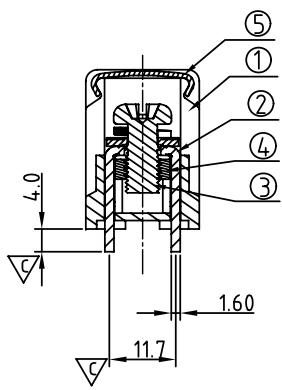
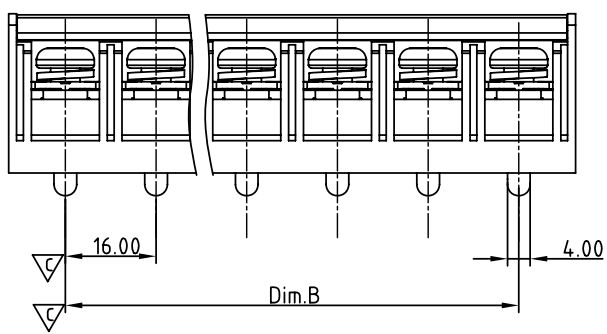
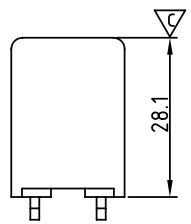
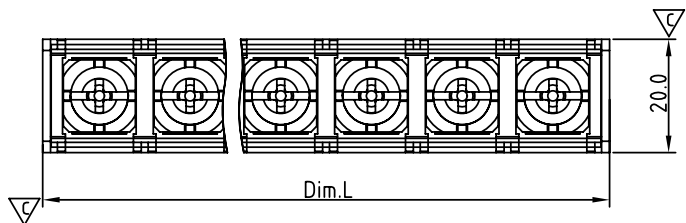


SIGN	DATE	DESCRIPTION	APPROVER
△	11/10'10	Current is changed from 75A to 65A	Aaron
△	11/10'10	Wire range is changed from 10-4 AWG to 10-6 AWG	Aaron
△	11/10'10	Add is cULus Mark	Aaron
△	12/12'12	Change the screw plating specification	Jacky
△	12/12'12	Change the dimensional tolerance	Jacky

THIS IS CAD DRAWING, DO NOT REVISE MANUALLY!!!



P.C.B LAYOUT(Top View)

N= Number of poles
 Dim.B= (N-1)x16.0
 Dim.L= (N-1)x16.0+20.0

POLE	2P~6P	7P~10P
Dim.B	±0.40	±0.50
Dim.L	±0.40	±0.50

MATERIALS ELECTRICAL
 RATED VOLTAGE & CURRENT: 600 V, 65A △
 WITHSTAND VOLTAGE: AC 3000 V/Min
 INSULATION RESISTANCE: 1000 MΩ OR MORE AT DC 500 V
 OPERATING TEMPERATURE RANG: -40 °C ~ +115°C
 SCREW TORQUE VALUE: 26 Lb-In.
 WIRE RANGE: 10 - 6 AWG △
 1) BODY: THERMOPLASTICS, UL94-V0 BLACK
 2) TERMINAL: BRASS, 1.6t, Tin PLATED
 △ 3) TERMINAL SCREWS WITH WASHER: STEEL, M6.0
 4) TERMINAL NUT: STEEL Ni PLATED M6.0
 5) COVER: PC, TRANSPARENT

APPROVAL: △
 Critical dimension: ▽
 PART NO.:

YK 901 xx 2 x x 00G

NO. OF POLES
 02: 2 POLES
 03: 3 POLES
 04: 4 POLES
 ...
 10: 10 POLES

RoHS compliant (lead<4%) In copper Alloy
 MARK
 0: "@" MARK
 1: "ANY" MARK

TERMINAL & SCREW PLATED
 0: TERMINAL & SCREW: G/F
 △ 1: TERMINAL: G/F, SCREW: Zinc
 2: TERMINAL: Sn, SCREW: G/F
 △ 3: TERMINAL: Sn, SCREW: Zinc

ANYTEK				CUSTOMER COPY			
TITLE		YK901 With cover and W/o flange SERIES					
PART NO.		YK901xx2xx00G		DWG NO.		8YK0001-901	
APPROVED		CHECKED	DESIGNED	DRAWN	CUST NO.		Tolerance
			Jacky 2012.12.12	Jacky 2012.12.12			X. ±0.50
					UNIT: mm		X.X ±0.30
					SCALE: NONE		X.XX ±0.10
					SHEET: 01/01		X° ±1°
					REV.: D		