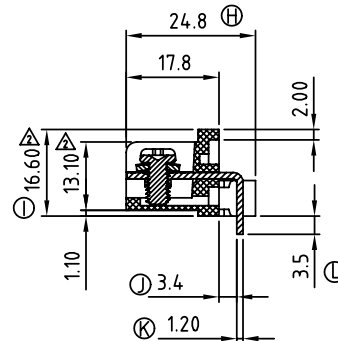
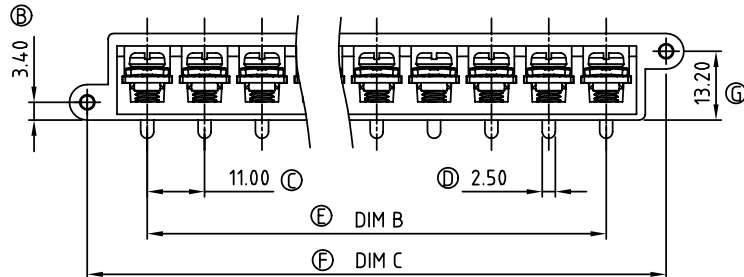
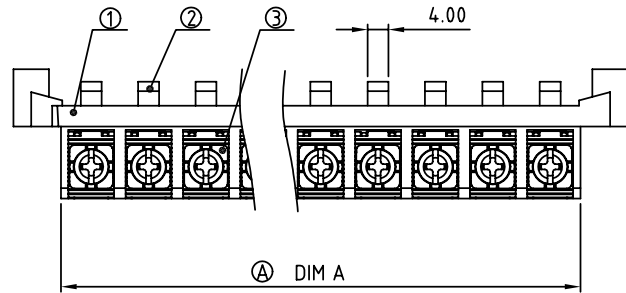


SIGN	DATE	DESCRIPTION	APPROVER
△	2/07'06	Part No. changed	Tony
△	10/23'06	Added demention 16.60 and 13.10	Steady
△	5/20'09	Voltage & Current changed from DC 24V,30A to 300V,20A	Eris
△	5/20'09	Temperature changed from -40°C-105°C to -40°C-115°C	Eris
△	5/20'09	Screw torque value changed from 10Kgf.cm to 11lb-In	Eris
△	5/20'09	Add approval "CULUS"	Eris
△	01/12'10	The Dimension is changed from : N×11.0+0.6 to N×11.0+0.2	Seamus

THIS IS CAD DRAWING, DO NOT REVISE MANUALLY!!!



- MATERIALS ELECTRICAL**
- △ RATED VOLTAGE & CURRENT: 300 V, 20 A
 - WITHSTAND VOLTAGE: AC 2000 V/Min
 - INSULATION RESISTANCE: 1000 MΩ OR MORE AT DC 500 V
 - △ OPERATING TEMPERATURE RANG: -40 °C ~ +115°C
 - △ SCREW TORQUE VALUE: 11lb-In
 - WIRE RANGE: 22-12 AWG
 - 1) MOLDED PARTS: Thermoplastic (UL 94 V-0)
 - 2) TERMINAL: BRASS, 1.2t, Tin PLATED
 - 3) TERMINAL SCREWS: STEEL, Ni PLATED, M4

△ APPROVAL: CULUS

△ PART NO.:

YK 114 xx 3 x x 00G

- NO. OF POLES
- 02: 2 POLES
 - 03: 3 POLES
 - 04: 4 POLES
 - ...
 - 30: 30 POLES

G: Pb<40000 ppm

- MARK
- 0: "@" MARK
 - 1: "ANY" MARK

- TERMINAL & SCREW PLATED
- 0: TERMINAL & SCREW: G/F
 - 1: TERMINAL: G/F, SCREW: Ni
 - 2: TERMINAL: Sn, SCREW: G/F
 - 3: TERMINAL: Sn, SCREW: Ni

Dimension A&B&C

DIM A	N×11.0+0.2	△
DIM B	(N-1)×11.0	
DIM C	(N+1)×11+1	

N=Number of contacts

Poles	A&B Tolerance
2P-8P	±0.20
9P-14P	±0.30
15P-20P	±0.40
21P-24P	±0.50
25P-30P	±0.60

ANYTEK

CUSTOMER COPY

ALL RIGHTS RESERVED. REPRODUCTION OR ISSUE TO THIRD PARTIES IN ANY FORM WHATSOEVER IS NOT PERMITTED WITHOUT WRITTEN AUTHORITY FROM THE PROPRIETOR. PROPERTY OF ANYTEK TECHNOLOGY CO., LTD

TITLE	YK-114 FINISHED PRODUCTS			
PART NO.	YK114xx3xx00G	DWG NO.	8YK0001-114	
APPROVED	CHECKED	DESIGNED	DRAWN	CUST NO.
	Seamus 2010.01.12	Seamus 2010.01.12	Aaron 2009.12.14	
				 UNIT: mm SCALE: NONE SHEET: 01/01 REV.: F
				Tolerance X. ±0.50 X.X ±0.30 X.XX ±0.10 X° ±1°