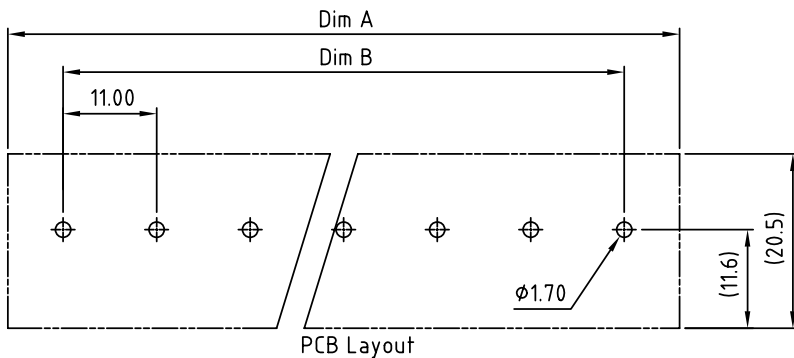
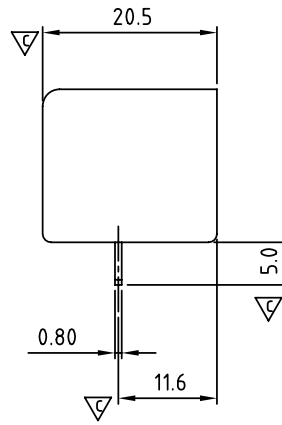
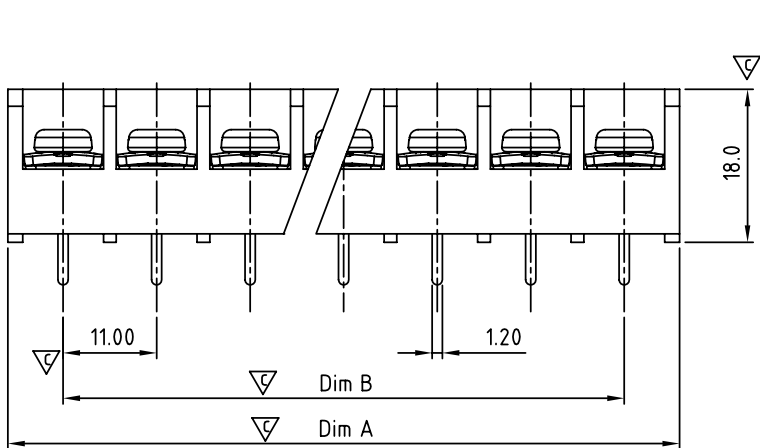
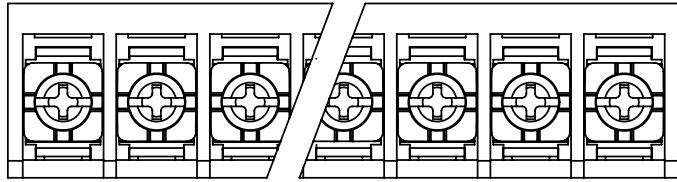


SIGN	DATE	DESCRIPTION	APPROVER
△	01/07'09	APPROVAL:cULus	Kind
△	01/07'09	Wire range changed from 22-10AWG to 22-12AWG.	Kind
△	01/07'09	Temperature changed from -40~105°C to -40~115°C	Kind
△	10/29'12	Change the screw plating specification	Jacky
△	10/29'12	Change the electrical specification	Jacky
△	10/29'12	Change the electrical specification	Jacky
△	03/18'13	Update the drawing	Jacky

THIS IS CAD DRAWING, DO NOT REVISE MANUALLY!!!



- △ MATERIALS ELECTRICAL
- RATED VOLTAGE & CURRENT: 300 V, 30 A
- WITHSTAND VOLTAGE: AC 2000 V/Min
- INSULATION RESISTANCE: 1000 MΩ OR MORE AT DC 500 V
- △ OPERATING TEMPERATURE RANG: -40 °C ~ +115 °C
- △ SCREW TORQUE VALUE: 9.5lb-In.
- △△△ WIRE RANGE: 10~22AWG str/sol
- 1) MOLDED PARTS: POLYIMIDE 66, UL 94 V-0 BLACK
- 2) TERMINAL: BRASS, 0.8t, Tin PLATED
- △ 3) TERMINAL SCREWS: STEEL, M4
- △△ APPROVAL:
- PART NO:
- Critical dimension: ▽

YK 555 xx 0 x x 00G

NO. OF POLES ————

02: 2 POLES
03: 3 POLES
04: 4 POLES
:
30: 30 POLES

——— G:RoHS compliant(lead<4%)
in copper alloy

——— MARK

0: "@" MARK
1: "ANY" MARK

——— TERMINAL & SCREW PLATED

0: TERMINAL & SCREW: G/F
△ 1: TERMINAL: G/F, SCREW: Zinc
2: TERMINAL: Sn, SCREW: G/F
△ 3: TERMINAL: Sn, SCREW: Zinc

N=Number of contacts

DIM		TOL				
		2P-4P	5P-8P	9P-16P	17P-23P	24P-30P
Dim A	N×11.0+2.0	±0.30	±0.40	±0.50	±0.60	±0.80
Dim B	(N-1)×11.0	±0.30	±0.40	±0.50	±0.60	±0.80

ANYTEK

CUSTOMER COPY
ALL RIGHTS RESERVED. REPRODUCTION OR ISSUE TO THIRD PARTIES IN ANY FORM WHATSOEVER IS NOT PERMITTED WITHOUT WRITTEN AUTHORITY FROM THE PROPRIETOR. PROPERTY OF ANYTEK TECHNOLOGY CO., LTD

TITLE		YK-555 W/O Flange Series			
PART NO.	YK555xx0xx00G	DWG NO.	8YK0001-555		
APPROVED	CHECKED	DESIGNED	DRAWN	CUST NO.	Tolerance
		Jacky 2013.03.18	Jacky 2013.03.18		X. ±0.50 X.X ±0.30 X.XX ±0.10 X° ±1°
				SHEET: 01/01	REV.: E