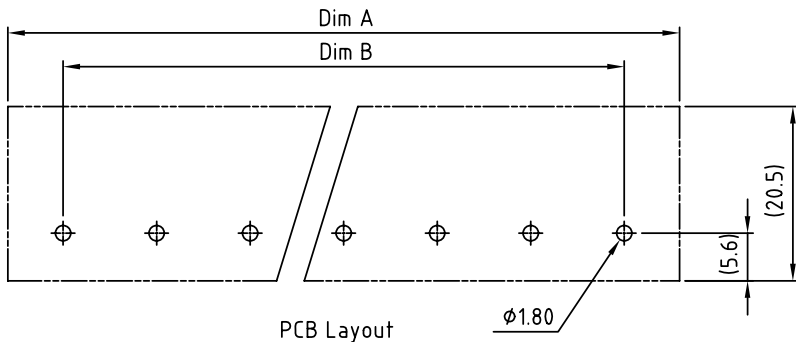
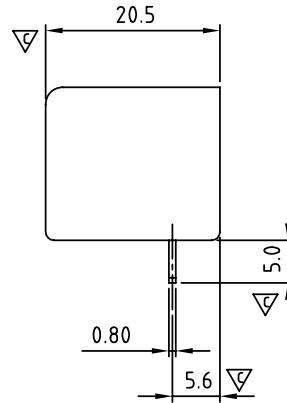
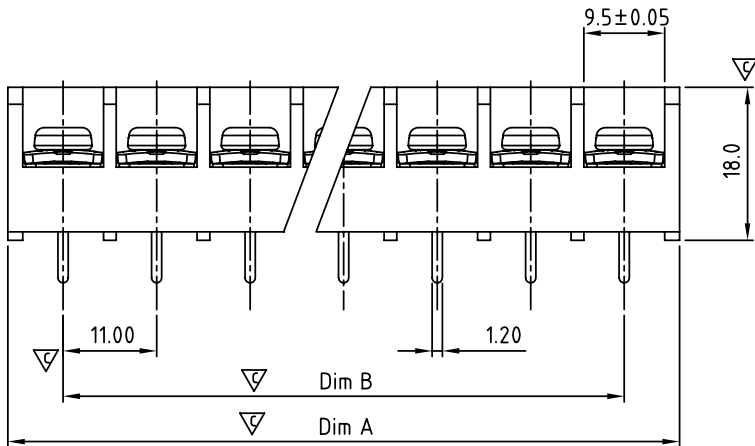
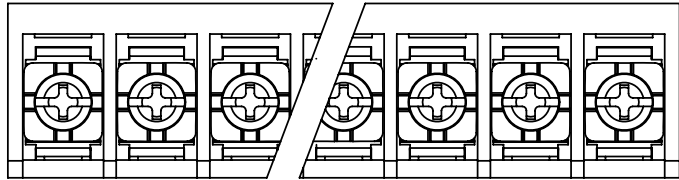


SIGN	DATE	DESCRIPTION	APPROVER
△	2/04'06	Part No. changed	Tony
△	01/07'09	APPROVAL:cULus	Kind
△	01/07'09	Wire range changed from 22-12AWG to 22-10AWG.	Kind
△	01/07'09	Temperature changed from -40~105°C to -40~115°C	Kind
△	09.4.08	Torque is changed	JODY
△	10/28'12	Change the dimensional tolerance	Jacky
△	10/28'12	Change the screw plating specification	Jacky
△	10/28'12	Change the electrical specification	Jacky
△	03/14'13	Update the drawing	Jacky

THIS IS CAD DRAWING, DO NOT REVISE MANUALLY!!!



MATERIALS ELECTRICAL
RATED VOLTAGE & CURRENT: 300 V, 30 A
WITHSTAND VOLTAGE: AC 2000 V/Min
INSULATION RESISTANCE: 1000 MΩ OR MORE AT DC 500 V
△ OPERATING TEMPERATURE RANG: -40 °C ~ +115 °C
△△ SCREW TORQUE VALUE: 9.5 Lb-In.
△△△ WIRE RANGE: 22-10AWG str/sol
 1) MOLDED PARTS: Thermoplastic, UL 94 V-0 BLACK
 2) TERMINAL: BRASS, 0.8t, Tin PLATED
 3) TERMINAL SCREWS: STEEL, M4
△ APPROVAL: _{us}
△ PART NO.: Critical dimension: ▽

YK 551xx0xx00G
 NO. OF POLES: 02: 2 POLES, 03: 3 POLES, 04: 4 POLES, ... 30: 30 POLES
 G:RoHS compliant(lead<4%) in copper alloy
 MARK: 0: "@" MARK, 1: "ANY" MARK
 TERMINAL & SCREW PLATED: 0: TERMINAL & SCREW: G/F, 1: TERMINAL: G/F, SCREW: Zinc, 2: TERMINAL: Sn, SCREW: G/F, 3: TERMINAL: Sn, SCREW: Zinc

DIM		TOL				
		2P-4P	5P-8P	9P-16P	17P-23P	24P-30P
DIM A	N×11.0+2.0	±0.30	±0.40	±0.50	±0.60	±0.80
DIM B	(N-1)×11.0	±0.30	±0.40	±0.50	±0.60	±0.80

ANYTEK				CUSTOMER COPY			
ALL RIGHTS RESERVED. REPRODUCTION OR ISSUE TO THIRD PARTIES IN ANY FORM WHATSOEVER IS NOT PERMITTED WITHOUT WRITTEN AUTHORITY FROM THE PROPRIETOR. PROPERTY OF ANYTEK TECHNOLOGY CO., LTD							
TITLE		YK-551 W/O Flange Series					
PART NO.		YK551xx0xx00G		DWG NO.		8YK0001-551	
APPROVED		CHECKED	DESIGNED	DRAWN	CUST NO.		Tolerance
			Jacky 2013.03.14	Jacky 2013.03.14			X. ±0.50 X.X ±0.30 X.XX ±0.10 X* ±1*
		SHEET: 01/01		REV: G			