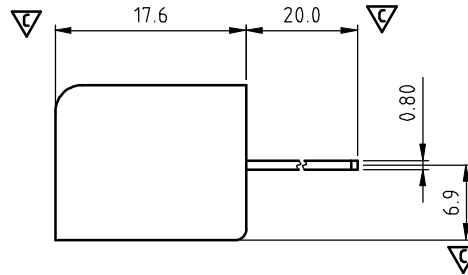


PCB Layout



N = Number of poles
 Dim A = $N \times 9.5 + 1.5$
 Dim B = $(N-1) \times 9.5$

Poles	Tol.	Dim A & B
2-4p		±0.20
5-8p		±0.25
9-16p		±0.35
17-23p		±0.40
24-30p		±0.50

SIGN	DATE	DESCRIPTION	APPROVER
△	10/20'08	Add APPROVAL: : CQC	Kind
△	4/17'09	Explanation changed	Eris
△	06/04 '11	Critical dimension is changed.	Tason
△	06/04 '11	The Wire Range is changed from 20-14AWG to 22-14AWG	Tason
△	06/04 '11	The tolerance table is changed.	Tason
△	06/16 '11	The dimension is changed from 5.55 to 5.5	Tason
△	06/16 '11	The dimension is changed from (5.6) to (5.5)	Tason
△	06/16 '11	The dimension is changed from 1.6 to 1.5	Tason
△	11/10'12	Change the screw plating specification	Jacky
△	12/23'13	Change the withstand voltage , current, Screw Torque.	Guoxue

THIS IS CAD DRAWING, DO NOT REVISE MANUALLY!!!

MATERIALS ELECTRICAL cULus CQC
 △ RATED VOLTAGE & CURRENT: 300 V, 30A / 300V 24A △
 WITHSTAND VOLTAGE: AC2500V/min △
 INSULATION RESISTANCE: 1000 MΩ OR MORE AT DC 500 V
 OPERATING TEMPERATURE RANG: -40 °C ~ +115 °C
 SCREW TORQUE VALUE: 10.54 Lb-In. / 0.8Nm △
 △ WIRE RANGE: 22 - 10 AWG / 22-14 AWG △
 1) MOLDED PARTS: Thermoplastic, UL 94 V-0 BLACK
 2) TERMINAL: BRASS, 0.8t, Tin PLATED
 3) TERMINAL SCREWS: STEEL, M3.5

△ Critical dimension: △
 △ APPROVAL: cULus CQC
 PART NO.: YK 446 xx 0 x x 00G
 G: RoHS compliant (lead < 4%) in copper alloy
 MARK 0: "@ " MARK
 NO. OF POLES
 02: 2 POLES
 03: 3 POLES
 04: 4 POLES
 :
 30: 30 POLES
 TERMINAL & SCREW PLATED 1: "ANY" MARK
 0: TERMINAL & SCREW: G/F
 △ 1: TERMINAL: G/F, SCREW: Zinc
 :
 △ 3: TERMINAL: Sn, SCREW: Zinc

ANYTEK				CUSTOMER COPY			
ALL RIGHTS RESERVED. REPRODUCTION OR ISSUE TO THIRD PARTIES IN ANY FORM WHATSOEVER IS NOT PERMITTED WITHOUT WRITTEN AUTHORITY FROM THE PROPRIETOR. PROPERTY OF ANYTEK TECHNOLOGY CO., LTD							
TITLE	YK-446 Series			DWG NO.	8YK001-446		
PART NO.	YK446xx0xx00G			CUST NO.			
APPROVED	CHECKED	DESIGNED	DRAWN	Tolerance			
		Guoxue 2014.01.08	Guoxue 2014.01.08	UNIT: mm		X. ±0.50	
				SCALE: NONE		X.X ±0.30	
				SHEET: 01/01		X.XX ±0.10	
				REV.: H		X° ±1°	