

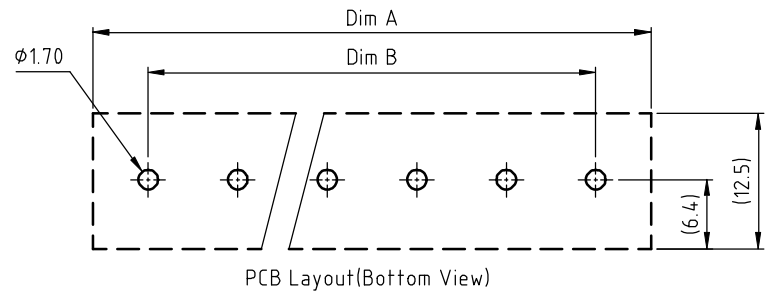
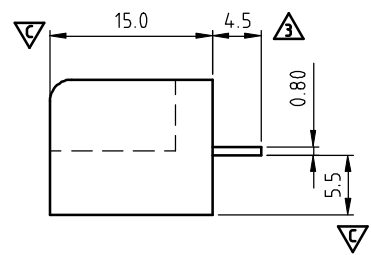
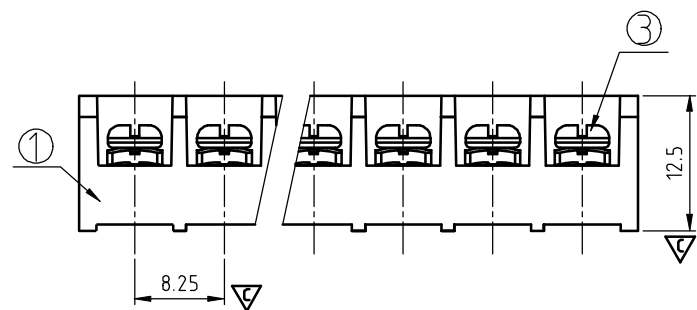
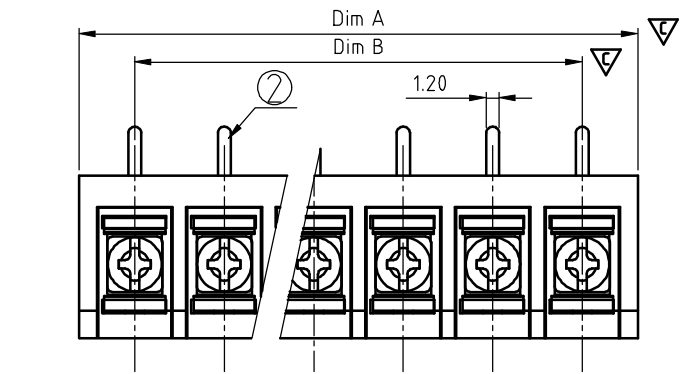
SIGN	DATE	DESCRIPTION	APPROVER
△	8/23'08	Temperature rang changed from -40 ~ 105°C to -40 ~ 115°C	Kind
△	03/17'09	Add stipulation	Seamus
△	06/22'09	The dimension changed from 5.0 to 4.5	Aaron
△	06/04'11	Critical dimension is changed.	Tason
△	06/04'11	The Wire Range is changed from 20-12AWG to 22-12AWG	Tason
△	06/04'11	The tolerance table is changed.	Tason
△	11/27'12	Change the screw plating specification	Jacky
△	12/07'13	Change the withstand voltage and current	Jacky

THIS IS CAD DRAWING, DO NOT REVISE MANUALLY!!!

- MATERIALS ELECTRICAL
- △ RATED VOLTAGE & CURRENT: 300 V, 20 A/300 V, 32 A
  - △ WITHSTAND VOLTAGE: AC 2500 V/Min
  - △ INSULATION RESISTANCE: 1000 MΩ OR MORE AT DC 500 V
  - △ OPERATING TEMPERATURE RANG: -40 °C ~ +115 °C
  - SCREW TORQUE VALUE: 8.8 Lb-In
  - WIRE RANGE: 22 - 12 AWG △5
  - 1) MOLDED PARTS: POLYIMIDE 66, UL 94 V-0 BLACK
  - 2) TERMINAL: BRASS, 0.8t, Tin PLATED
  - △3) TERMINAL SCREWS: STEEL, M3
  - △ Critical dimension: ∇
  - APPROVAL: △

YK 332 xx 0 x x 00G

- RoHS compliant (lead<4%) In copper Alloy
- MARK
- 0: "@" MARK
  - 1: "ANY" MARK
- NO. OF POLES
- 02: 2 POLES
  - 03: 3 POLES
  - 04: 4 POLES
  - ...
  - 30: 30 POLES
- TERMINAL & SCREW PLATED
- △ 0: TERMINAL & SCREW: G/F
  - △ 1: TERMINAL: G/F, SCREW: Zinc
  - 2: TERMINAL: Sn, SCREW: G/F
  - △ 3: TERMINAL: Sn, SCREW: Zinc



△  
 N = Number of poles  
 Dim A = N x 8.25 + 2.0  
 Dim B = (N - 1) x 8.25

Poles	Tol.	Dim A & B
2-5p		±0.20
6-10p		±0.25
11-16p		±0.35
17-24p		±0.40
25-30p		±0.50

<b>ANYTEK</b>				<b>CUSTOMER COPY</b>					
								ALL RIGHTS RESERVED. REPRODUCTION OR ISSUE TO THIRD PARTIES IN ANY FORM WHATSOEVER IS NOT PERMITTED WITHOUT WRITTEN AUTHORITY FROM THE PROPRIETOR. PROPERTY OF ANYTEK TECHNOLOGY CO., LTD	
TITLE		YK-332 W/O Flange Series							
PART NO.		YK332xx0xx00G			DWG NO.		8YK0001-332		
APPROVED		CHECKED		DESIGNED		DRAWN		CUST NO.	
		Jacky 2013.12.07		Jacky 2013.12.07				Tolerance	
								X. ±0.50 X.X ±0.30 X.XX ±0.10 X° ±1°	
						SHEET: 01/01		REV.: I	