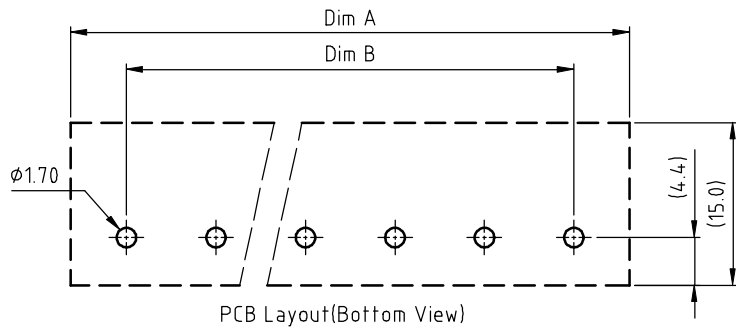
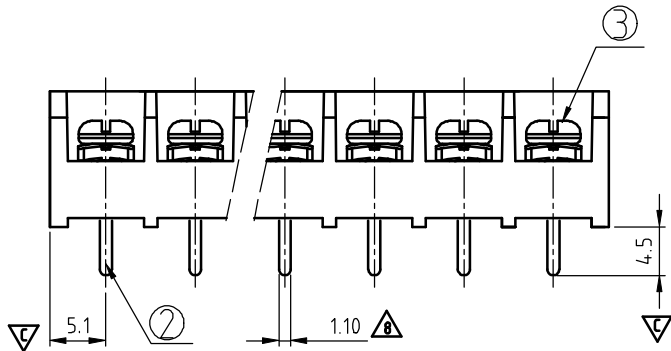
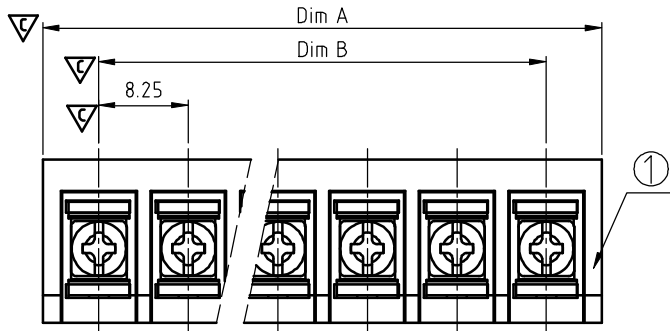


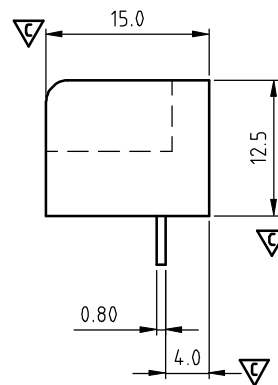
⚠ (Back View)



PCB Layout(Bottom View)

⚠
 N = Number of poles
 Dim A = $N \times 8.25 + 2.0$
 Dim B = $(N - 1) \times 8.25$

Poles	Tol.	Dim A & B
2-5p		±0.20
6-10p		±0.25
11-16p		±0.35
17-24p		±0.40
25-30p		±0.50



SIGN	DATE	DESCRIPTION	APPROVER
⚠	2/06'06	Part No. changed	Tony
⚠	03/17'09	Add stipulation	Seamus
⚠	03/17'09	Dimension is changed	Seamus
⚠	06/04'11	Critical dimension is changed.	Tason
⚠	06/04'11	The Wire Range is changed from 20-12AWG to 22-12AWG	Tason
⚠	06/04'11	The tolerance table is changed.	Tason
⚠	11/27'12	Change the screw plating specification	Jacky
⚠	11/27'12	Change the dimension from 1.20 to 1.10	Jacky
⚠	12/03'13	Change the withstand voltage and current	Jacky
⚠	12/03'13	Add the View	Jacky

THIS IS CAD DRAWING, DO NOT REVISE MANUALLY!!!

MATERIALS ELECTRICAL

- ⚠ RATED VOLTAGE & CURRENT: 300 V, 20 A/300 V, 32 A
- ⚠ WITHSTAND VOLTAGE: AC 2500V/Min
- INSULATION RESISTANCE: 1000 MΩ OR MORE AT DC 500 V
- OPERATING TEMPERATURE RANG: -40 °C ~ +115 °C
- SCREW TORQUE VALUE: 8.8 Lb-In/ 8.8 Lb-In..
- WIRE RANGE: 22 - 12 AWG/22 - 12 AWG ⚠
- 1) MOLDED PARTS: POLYIMIDE 66, UL 94 V-0 BLACK
- 2) TERMINAL: BRASS, 0.8t, Tin PLATED
- 3) TERMINAL SCREWS: STEEL,M3

APPROVAL: ⚠

⚠ PART NO.:

YK 331 xx 0 x x 00G

- NO. OF POLES: 02: 2 POLES, 03: 3 POLES, 04: 4 POLES, ... 30: 30 POLES
- MARK: 0: "@ " MARK, 1: "ANY " MARK
- TERMINAL & SCREW PLATED: 0: TERMINAL & SCREW: G/F, 1: TERMINAL: G/F, SCREW: Zinc, 2: TERMINAL: Sn, SCREW: G/F, 3: TERMINAL: Sn, SCREW: Zinc
- G:RoHS compliant (lead<4%) in copper alloy

ANYTEK				CUSTOMER COPY			
ALL RIGHTS RESERVED. REPRODUCTION OR ISSUE TO THIRD PARTIES IN ANY FORM WHATSOEVER IS NOT PERMITTED WITHOUT WRITTEN AUTHORITY FROM THE PROPRIETOR. PROPERTY OF ANYTEK TECHNOLOGY CO., LTD							
TITLE	YK-331 W/o flange & W/o cover Series			DWG NO.	8YK001-331		
PART NO.	YK331xx0xx00G			CUST NO.			
APPROVED	CHECKED	DESIGNED	DRAWN	Tolerance			
		Jacky	Jacky		UNIT: mm	X.	±0.50
		2013.12.23	2013.12.23		SCALE: NONE	X.X	±0.30
				SHEET: 01/01	REV.: G	X.XX	±0.10
						X°	±1°