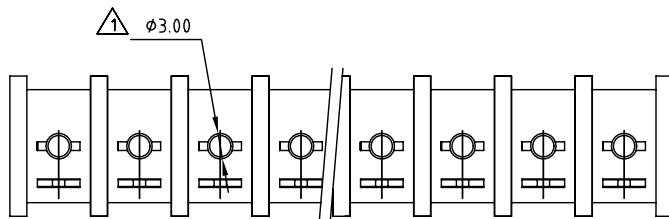
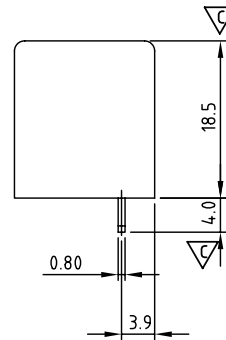
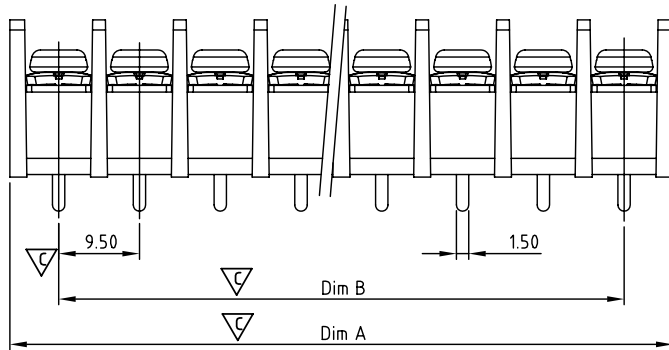
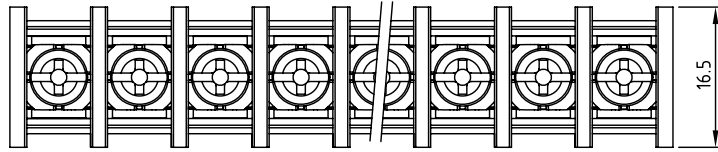


SIGN	DATE	DESCRIPTION	APPROVER
△	10/14'08	將Body底部方槽改為φ3.0圓孔形	Kind
△	09.4.13	Current, wire range, approval are changed	JODY
△	10/23'12	Change the screw plating specification	Jacky
△	10/23'12	Change the dimensional tolerance	Jacky

THIS IS CAD DRAWING, DO NOT REVISE MANUALLY!!!



N=Number of contacts  
Dimension A&B

DIM A	$N \times 9.5 + 2.0$
DIM B	$(N-1) \times 9.5$

Dimension A&B	Tolerance
>6-30	±0.30
>30-120	±0.40
>120-400	±0.60

MATERIALS ELECTRICAL

RATED VOLTAGE & CURRENT: 300 V, 30 A △  
 WITHSTAND VOLTAGE: AC 2000 V/Min  
 INSULATION RESISTANCE: 1000 MΩ OR MORE AT DC 500 V  
 OPERATING TEMPERATURE RANG: -40 °C ~ +115 °C  
 SCREW TORQUE VALUE: 8.8 Lb-In.  
 WIRE RANGE: 10-22 AWG △  
 1) MOLDED PARTS: Thermoplastic, UL 94 V-0 BLACK  
 2) TERMINAL: BRASS, 0.8t, Tin PLATED  
 3) TERMINAL SCREWS: STEEL, M3.5

△ APPROVAL: C US

PART NO.:

Critical dimension: ▽

YK 514 xx 0 x x 00G

NO. OF POLES

02: 2 POLES  
 03: 3 POLES  
 04: 4 POLES

30: 30 POLES

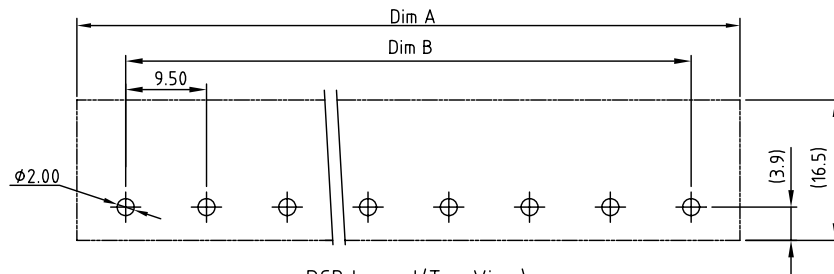
G:RoHS compliant(lead<4%)  
 in copper alloy

MARK

0: "@ " MARK  
 1: "ANY " MARK

TERMINAL & SCREW PLATED

0: TERMINAL & SCREW: G/F  
 △ 1: TERMINAL: G/F, SCREW: Zinc  
 2: TERMINAL: Sn, SCREW: G/F  
 △ 3: TERMINAL: Sn, SCREW: Zinc  
 4: TERMINAL: Sn, SCREW: zn



PCB Layout(Top View)

**ANYTEK**

**CUSTOMER COPY**

ALL RIGHTS RESERVED. REPRODUCTION OR ISSUE TO THIRD PARTIES IN ANY FORM WHATSOEVER IS NOT PERMITTED WITHOUT WRITTEN AUTHORITY FROM THE PROPRIETOR. PROPERTY OF ANYTEK TECHNOLOGY CO., LTD

TITLE		YK-514 W/O Flange Series			
PART NO.		YK514xx0xx00G		DWG NO.	8YK0001-514
APPROVED	CHECKED	DESIGNED	DRAWN	CUST NO.	
		Jacky 2012.10.23	Jacky 2012.10.23		
					Tolerance
					UNIT: mm
				SCALE: NONE	X.X ±0.30
				SHEET: 01/01	X.XX ±0.10
				REV: G	X° ±1°