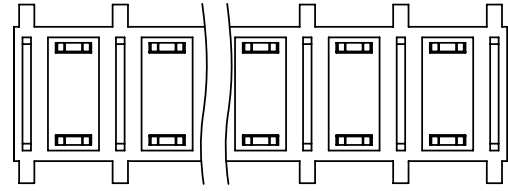
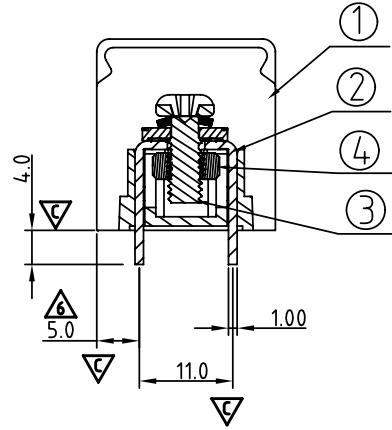
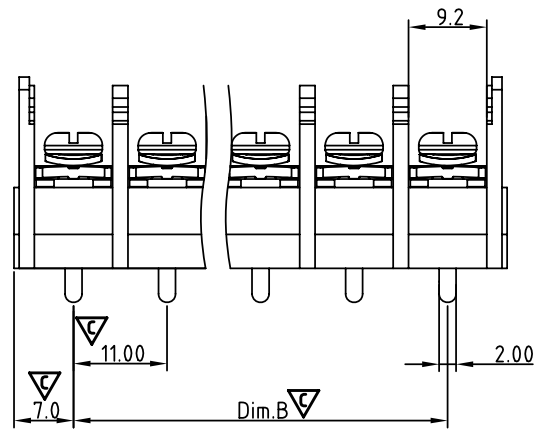
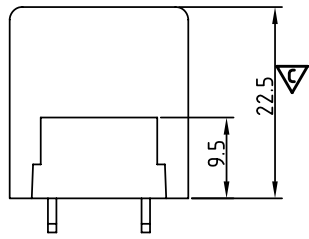
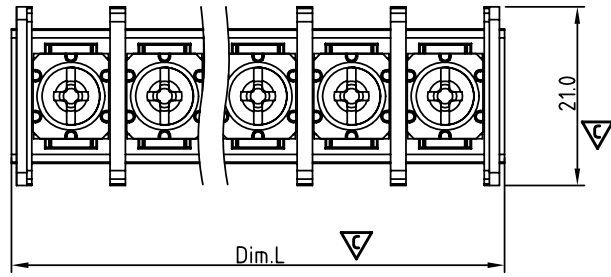


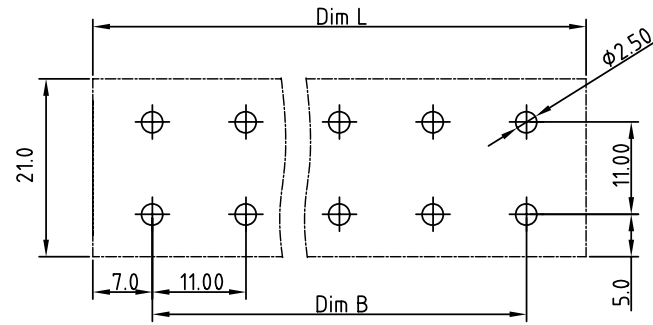
SIGN	DATE	DESCRIPTION	APPROVER
△	11/13'09	Wire range changed is from 8 - 18 AWG to 10 - 18 AWG	Aaron
△	04/26 '11	The wire range is changed from 18 - 10 AWG to 18 - 8 AWG	Tason
△	04/26 '11	Change here	Tason
△	04/26 '11	Add the Voltage&Current 600V 5A	Tason
△	04/26 '11	Voltage changed is from 2000V to 2500V	Tason
△	05/20 '11	The dimension is changed from 5.00 to 5.0	Tason
△	05/20 '11	Add the Critical dimension	Tason
△	12/11'12	Change the screw plating specification	Jacky
△	12/11'12	Change the dimensional tolerance	Jacky

THIS IS CAD DRAWING, DO NOT REVISE MANUALLY!!!



N= Number of poles
 Dim.B= (N-1)x11.0
 Dim.L= (N-1)x11.0+14.0

POLE	2-8P	9-16P
Dim.B	±0.40	±0.50
Dim.L	±0.40	±0.50



P.C.B LAYOUT (Top View)

MATERIALS ELECTRICAL
 RATED VOLTAGE & CURRENT: 300 V, 40A/600V 5A.
 WITHSTAND VOLTAGE: AC 2500 V/Min
 INSULATION RESISTANCE: 1000 MΩ OR MORE AT DC 1000 V
 OPERATING TEMPERATURE RANG: -40 °C ~ +115°C
 SCREW TORQUE VALUE: 16Lb-In.
 WIRE RANGE: 18 - 8 AWG
 1) BODY: THERMOPLASTICS, UL94-V0 BLACK
 2) TERMINAL: BRASS, 1.0t
 3) TERMINAL SCREWS WITH WASHER: STEEL, M4.0
 4) TERMINAL NUT: STEEL Ni Plated, M4.0

APPROVAL:
 Critical dimension:

YK 70A xx 0 x x 00G
 G RoHS compliant (lead<4%) In copper Alloy
 MARK
 0: "@" MARK
 1: "ANY" MARK
 TERMINAL & SCREW PLATED
 0: TERMINAL & SCREW: G/F
 1: TERMINAL: G/F, SCREW: Zinc
 2: TERMINAL: Sn, SCREW: G/F
 3: TERMINAL: Sn, SCREW: Zinc

NO. OF POLES
 02: 2 POLES
 03: 3 POLES
 05: 5 POLES
 ...
 16: 16POLES

ANYTEK				CUSTOMER COPY			
ALL RIGHTS RESERVED. REPRODUCTION OR ISSUE TO THIRD PARTIES IN ANY FORM WHATSOEVER IS NOT PERMITTED WITHOUT WRITTEN AUTHORITY FROM THE PROPRIETOR. PROPERTY OF ANYTEK TECHNOLOGY CO., LTD							
TITLE		YK70A W/o flange and W/o cover SERIES					
PART NO.		YK70Axx0xx00G		DWG NO.		8YK0001-70A	
APPROVED		CHECKED		DESIGNED		DRAWN	
				Tason 2011.05.20		Jacky 2012.12.11	
				CUST NO.		Tolerance	
						X. ±0.50	
				UNIT: mm		X.X ±0.30	
				SCALE: NONE		X.XX ±0.10	
				SHEET: 01/01		REV.: E	
						X° ±1°	