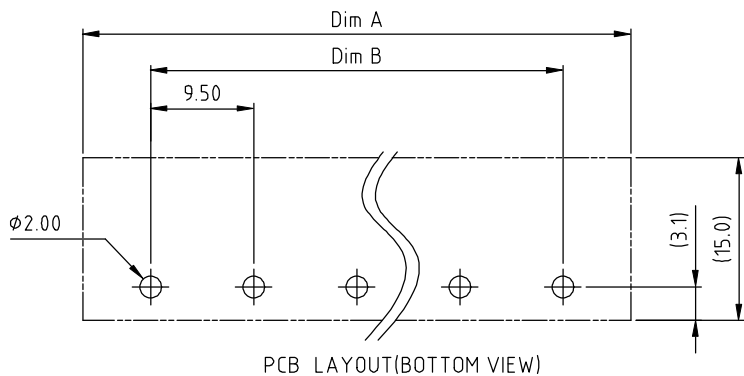
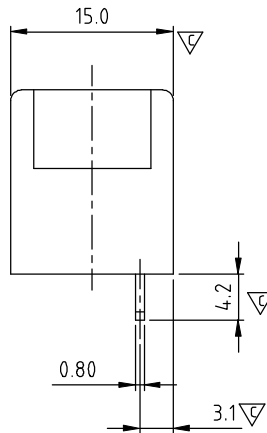
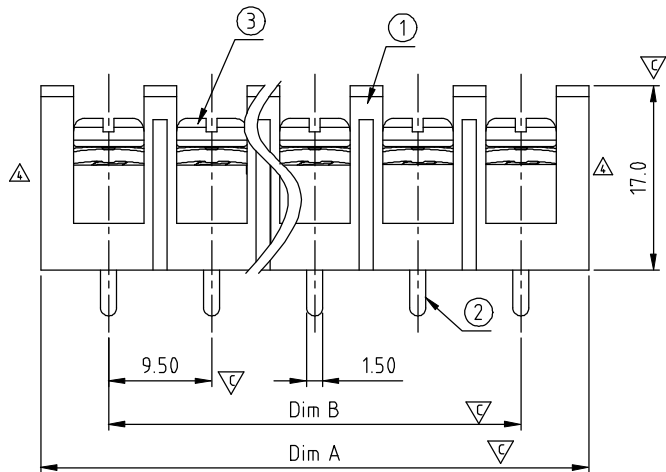


N=Number of contacts
Dimension A&B

DIM A	$N \times 9.5 + 3.0$
DIM B	$(N-1) \times 9.5$

△ △

Poles	Tolerance
4P	±0.20
5P-10P	±0.30
11P-24P	±0.40
25P-30P	±0.60



PCB LAYOUT (BOTTOM VIEW)

SIGN	DATE	DESCRIPTION	APPROVER
△	10/28'12	Change the dimensional tolerance	Jacky
△	10/28'12	Change the screw plating specification	Jacky
△	10/28'12	Change the electrical specification	Jacky
△	06/05'14	change the structure	Guoxue
△	06/05'14	Change the dimensional tolerance	Guoxue

THIS IS CAD DRAWING, DO NOT REVISE MANUALLY!!!

MATERIALS ELECTRICAL

- RATED VOLTAGE & CURRENT: 300 V, 20 A
 WITHSTAND VOLTAGE: AC 2000 V/Min
 INSULATION RESISTANCE: 1000 MΩ OR MORE AT DC 500 V
 △ OPERATING TEMPERATURE RANG: -40 °C ~ +115 °C
 SCREW TORQUE VALUE: 12 Lb-In.
 WIRE RANGE: 22 - 12AWG
 1) MOLDED PARTS: POLYIMIDE 66, UL 94 V-0 BLACK
 2) TERMINAL: BRASS, 0.8t
 △ 3) TERMINAL SCREWS: STEEL, M3.5

APPROVAL:

Critical dimension: ▽

PART No.:

YK 504 xx 0 x x 00G

- G: RoHS compliant (lead<4%) In copper Alloy
- MARK
- 0: "@" MARK
- 1: "ANY" MARK
- TERMINAL & SCREW PLATED
- 0: TERMINAL & SCREW: G/F
- △ 1: TERMINAL: G/F, SCREW: Zinc
- 2: TERMINAL: Sn, SCREW: G/F
- △ 3: TERMINAL: Sn, SCREW: Zinc

- NO. OF POLES
- 04: 4 POLES
- 05: 5 POLES
- 06: 6 POLES
- ...
- 30: 30 POLES

ANYTEK				CUSTOMER COPY			
ALL RIGHTS RESERVED. REPRODUCTION OR ISSUE TO THIRD PARTIES IN ANY FORM WHATSOEVER IS NOT PERMITTED WITHOUT WRITTEN AUTHORITY FROM THE PROPRIETOR. PROPERTY OF ANYTEK TECHNOLOGY CO., LTD							
TITLE	YK-504 Without Flange&Cover Series (4P-30P)			DWG NO.	8YK0002-504		
PART NO.	YK504xx0x00G			CUST NO.			
APPROVED	CHECKED	DESIGNED	DRAWN			Tolerance	
		Guoxue 2014.06.11	Guoxue 2014.06.11			X.	±0.50
						X.X	±0.30
						X.XX	±0.10
						X°	±1°
				SHEET: 01/01		REV.: D	