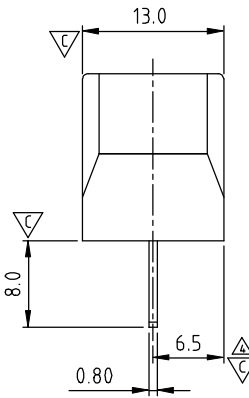
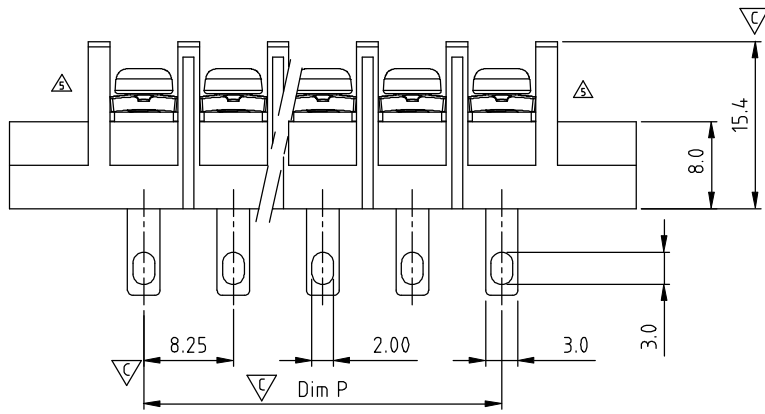
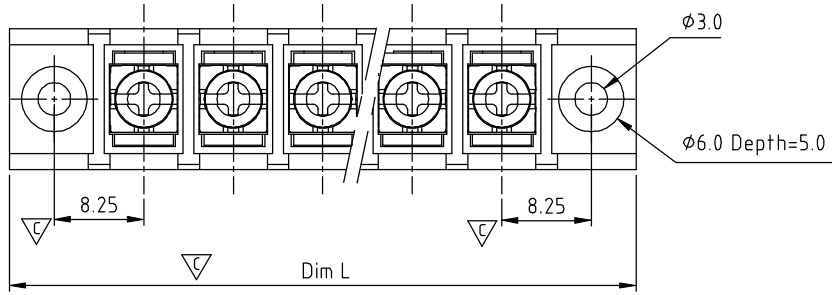


SIGN	DATE	DESCRIPTION	APPROVER
△	2006.10.20	Demention changed from (Nx8.25)±0.80 to (Nx8.25+8.3)±0.80	Steady
△	11/03'12	Change the screw plating specification	Jacky
△	11/03'12	Change the electrical specification	Jacky
△	11/03'12	Add the dimensional label	Jacky
△	06/03'14	change the structure	Guoxue
△	06/03'14	Change the dimensional tolerance	Guoxue

THIS IS CAD DRAWING, DO NOT REVISE MANUALLY!!!



MATERIALS ELECTRICAL

RATED VOLTAGE & CURRENT: 300 V, 20 A

WITHSTAND VOLTAGE: AC 2000 V/Min

INSULATION RESISTANCE: 1000 MΩ OR MORE AT DC 500 V

△ OPERATING TEMPERATURE RANG: -40 °C ~ +115 °C

SCREW TORQUE VALUE: 7 Lb-In.

WIRE RANGE: 22 - 12 AWG

1) MOLDED PARTS: Thermoplastic (UL 94 V-0)

2) TERMINAL: BRASS, 0.8t

△ 3) TERMINAL SCREWS: STEEL, M3

APPROVAL: us

PART No.:

Critical dimension:

YK 403 xx 3 x x 00G

NO. OF POLES

04: 4 POLES

05: 5 POLES

06: 6 POLES

:

30: 30 POLES

RoHS compliant (lead<4%) In copper Alloy

MARK

0: "@ " MAK

1: "ANY" MAK

TERMINAL & SCREW PLATED

0: TERMINAL & SCREW: G/F

△ 1: TERMINAL: G/F, SCREW: Zinc

2: TERMINAL: Sn, SCREW: G/F

△ 3: TERMINAL: Sn, SCREW: Zinc

N = Number of poles △

DIM		TOL				
		4P	5P-8P	9P-16P	17P-23P	24P-30P
Dim L	(N+1)×8.25+8.3	±0.30	±0.40	±0.50	±0.60	±0.80
Dim P	(N-1)×8.25	±0.30	±0.40	±0.50	±0.60	±0.80

ANYTEK				CUSTOMER COPY	
ALL RIGHTS RESERVED. REPRODUCTION OR ISSUE TO THIRD PARTIES IN ANY FORM WHATSOEVER IS NOT PERMITTED WITHOUT WRITTEN AUTHORITY FROM THE PROPRIETOR. PROPERTY OF ANYTEK TECHNOLOGY CO., LTD					
TITLE	YK-403 With Flange&W/O Cover Series (4P-30P)				
PART NO.	YK403xx3xx00G		DWG NO.	8YK0002-403	
APPROVED	CHECKED	DESIGNED	DRAWN	CUST NO.	Tolerance
		Guoxue 2014.06.11	Guoxue 2014.06.11		X. ±0.50
					X.X ±0.30
					X.XX ±0.10
					X° ±1°
				SHEET: 01/01	REV.: E