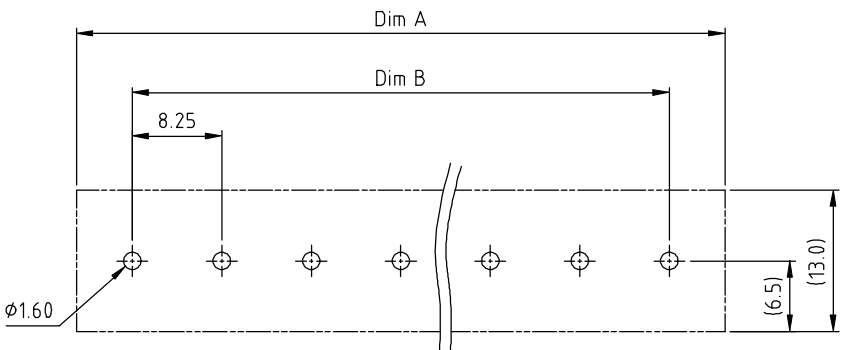
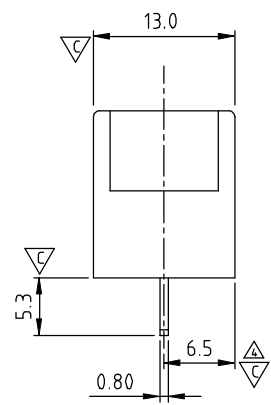
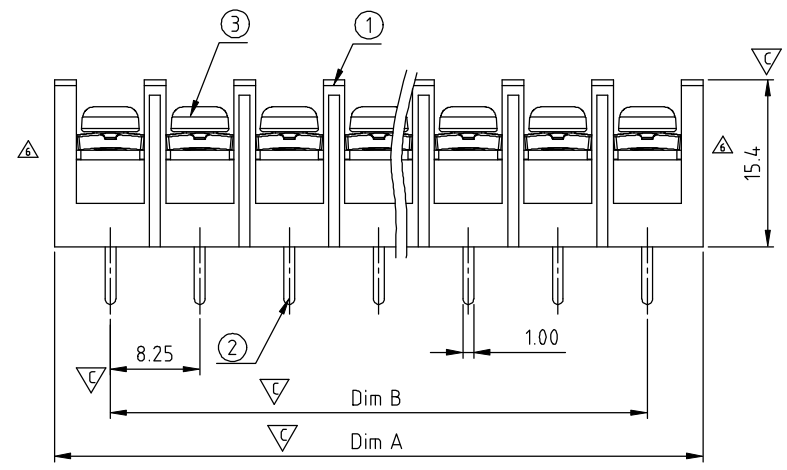


N = Number of poles
 Dim A = N × 8.25 + 2.0
 Dim B = (N - 1) × 8.25

	Dim A	Dim B
4P	±0.30	±0.30
5P-8P	±0.40	±0.40
9P-16P	±0.50	±0.50
17P-23P	±0.60	±0.60
24P-30P	±0.80	±0.80



PCB. LAYOUT (Top View)

SIGN	DATE	DESCRIPTION	APPROVER
△	10/30'12	Change the screw plating specification	Jacky
△	11/05'12	Change the electrical specification	Jacky
△	11/05'12	Change the dimensional tolerance	Jacky
△	11/05'12	Add the dimensional label	Jacky
△	06/03'14	Change the dimensional tolerance	Guo xue
△	06/03'14	change the structure	Guo xue

THIS IS CAD DRAWING, DO NOT REVISE MANUALLY!!!

MATERIALS ELECTRICAL
 RATED VOLTAGE & CURRENT: 300 V, 20 A
 WITHSTAND VOLTAGE: AC 2000 V/Min
 INSULATION RESISTANCE: 1000 MΩ OR MORE AT DC 500 V
 △ OPERATING TEMPERATURE RANG: -40 °C ~ +115 °C
 SCREW TORQUE VALUE: 7 Lb-In.
 WIRE RANGE: 22 - 12 AWG
 1) MOLDED PARTS: POLYIMIDE 66, UL 94 V-0 BLACK
 2) TERMINAL: BRASS, 0.8t
 3) TERMINAL SCREWS: STEEL, M3

APPROVAL: us
 Critical dimension:

YK 402 xx 0 x x 00G

NO. OF POLES
 04: 4 POLES
 05: 5 POLES
 06: 6 POLES
 ...
 30: 30 POLES

G:RoHS compliant (lead<4%)
 in copper alloy
 MARK
 0: "@" MARK
 1: "ANY" MARK
 TERMINAL & SCREW PLATED
 0: TERMINAL & SCREW: G/F
 △ 1: TERMINAL: G/F, SCREW: Zinc
 2: TERMINAL: Sn, SCREW: G/F
 △ 3: TERMINAL: Sn, SCREW: Zinc

ANYTEK				CUSTOMER COPY					
ALL RIGHTS RESERVED. REPRODUCTION OR ISSUE TO THIRD PARTIES IN ANY FORM WHATSOEVER IS NOT PERMITTED WITHOUT WRITTEN AUTHORITY FROM THE PROPRIETOR. PROPERTY OF ANYTEK TECHNOLOGY CO., LTD									
TITLE		YK-402 W/D Flange & W/O Cover Series (4P-30P)				DWG NO.		8YK0002-402	
PART NO.		YK402xx0xx00G				CUST NO.			
APPROVED		CHECKED		DESIGNED		DRAWN		Tolerance	
				Guoxue 2014.06.11		Guoxue 2014.06.11		X. ±0.50 X.X ±0.30 X.XX ±0.10 X° ±1°	
						UNIT: mm SCALE: NONE SHEET: 01/01 REV.: D			