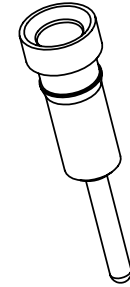
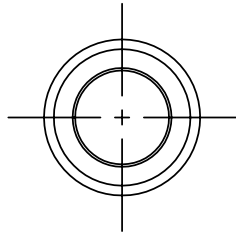


| | | | |
|--|------|-------------|----------|
| SIGN | DATE | DESCRIPTION | APPROVER |
| △ | | | |
| THIS IS CAD DRAWING, DO NOT REVISE MANUALLY!!! | | | |

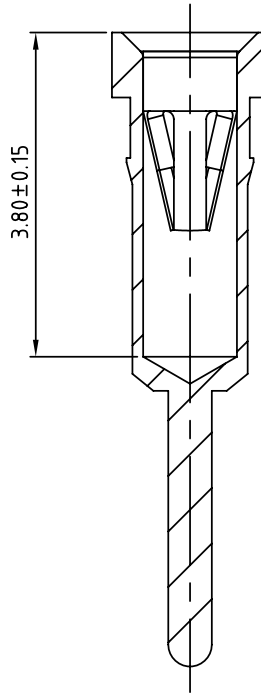
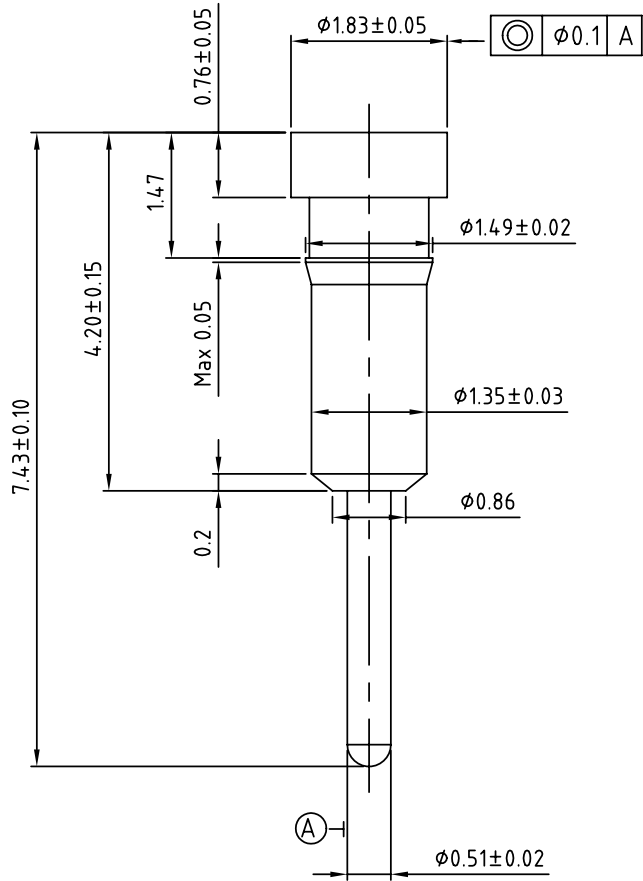


024000 X 00000G

| Code | Clip plated | Pin plated |
|------|-------------|------------|
| 0 | Gold flash | Tin 200u" |
| 1 | Gold 10u" | Tin 200u" |
| 2 | Gold 30u" | Tin 200u" |
| 3 | Tin 200u" | Tin 200u" |
| 4 | Gold flash | Gold flash |
| 5 | Gold 10u" | Gold flash |
| 6 | Gold 30u" | Gold flash |

NOTE:

1. Material: Brass, machined, CuZn38pB2
2. Plating: Ni80~120u" + Sn200~240u"



ANYTEK

CUSTOMER COPY

ALL RIGHTS RESERVED. REPRODUCTION OR ISSUE TO THIRD PARTIES IN ANY FORM WHATSOEVER IS NOT PERMITTED WITHOUT WRITTEN AUTHORITY FROM THE PROPRIETOR. PROPERTY OF ANYTEK TECHNOLOGY CO., LTD

| | | | | | |
|----------|---------|-----------------------|---------------------|------------------|--|
| TITLE | | O2 sleeve L:7.43mm 成品 | | | |
| PART NO. | | 024000x00000G | | DWG NO. 802-0001 | |
| APPROVED | CHECKED | DESIGNED | DRAWN | CUST NO. | |
| | | Seamus 2005.02.22 | Aaron 2005.02.22 | | |
| | | | | Tolerance | |
| | | | | X. ±0.50 | |
| | | | | X.X ±0.30 | |
| | | | | X.XX ±0.10 | |
| | | | | X* ±1* | |
| | | | | UNIT: mm | |
| | | | | SCALE: NONE | |
| | | | | REV.: B | |
| | | | | SHEET: 01/01 | |