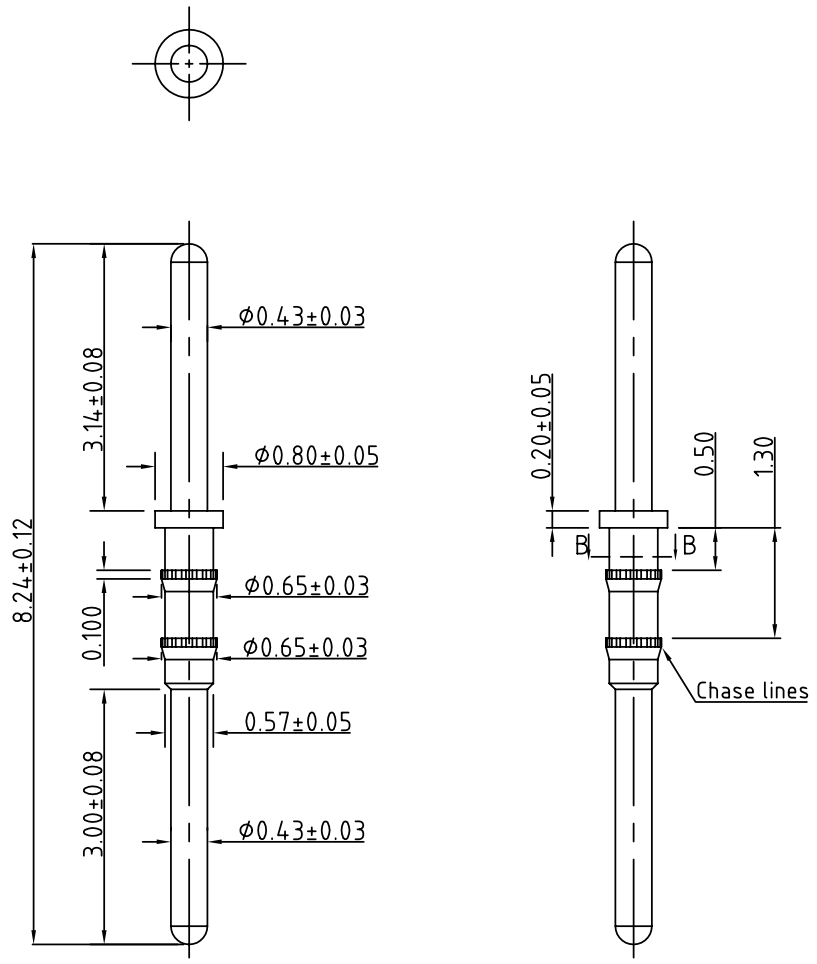


SIGN	DATE	DESCRIPTION	APPROVER
△			
THIS IS CAD DRAWING, DO NOT REVISE MANUALLY!!!			



DETAIL B-B
SCALE 40 : 1

Technical Data:
Material:
● Pin (outer sleeve) : Brass,machined, CuZn38Pb2(Need melting due to bending)
● Plating(outer sleeve) : Cu 40 u"-80 u"+Ni 50 u"-80 u"+Sn 200 u"-240 u"
● Dimmension of exterior diameter added 0.0145-0.020mm after plating.

ANYTEK				CUSTOMER COPY			
ALL RIGHTS RESERVED. REPRODUCTION OR ISSUE TO THIRD PARTIES IN ANY FORM WHATSOEVER IS NOT PERMITTED WITHOUT WRITTEN AUTHORITY FROM THE PROPRIETOR. PROPERTY OF ANYTEK TECHNOLOGY CO., LTD							
TITLE		O5 8.24mmL 雙凸 Pin(Chase lines).					
PART NO.		050000X00000G		DWG NO.		8050001	
APPROVED		CHECKED	DESIGNED	DRAWN	CUST NO.		Tolerance
			Joanna 2005.08.03	Joanna 2005.08.03			X. ±0.50 X.X ±0.30 X.XX ±0.10 X° ±1°
					SHEET: 01/01		UNIT: mm SCALE: NONE REV.: B