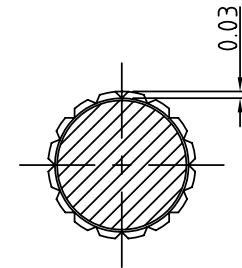
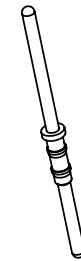
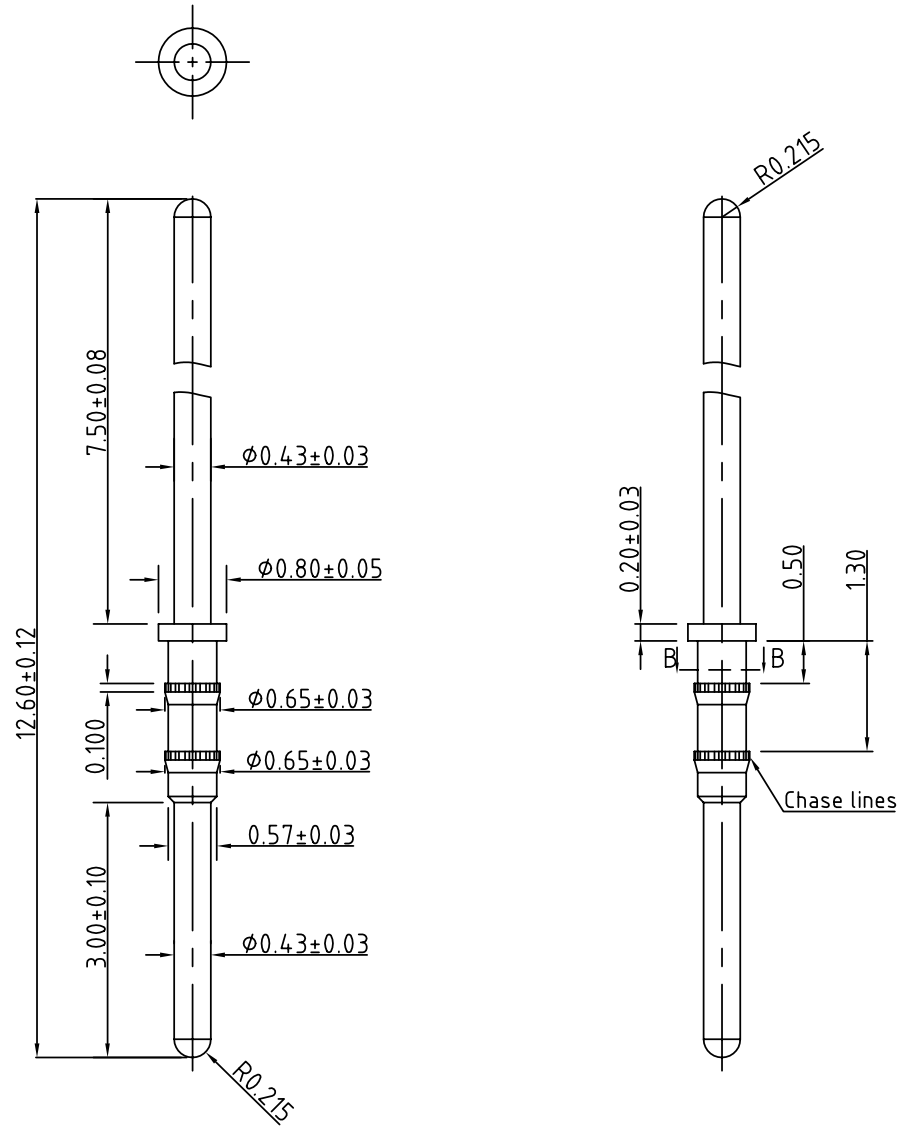


SIGN	DATE	DESCRIPTION	APPROVER
△			
THIS IS CAD DRAWING, DO NOT REVISE MANUALLY!!!			



DETAIL B-B  
SCALE 40 : 1

Technical Data:

Material:

- Pin (outer sleeve) : Brass,machined, CuZn38Pb2(Need melting due to bending)
- Plating(outer sleeve) : Cu 40 u"-80 u"+Ni 50 u"-80 u"+Sn 200 u"-240 u"
- Dimmension of exterior diameter added 0.0145-0.020mm after plating.

**ANYTEK**

**CUSTOMER COPY**

ALL RIGHTS RESERVED. REPRODUCTION OR ISSUE TO THIRD PARTIES IN ANY FORM WHATSOEVER IS NOT PERMITTED WITHOUT WRITTEN AUTHORITY FROM THE PROPRIETOR. PROPERTY OF ANYTEK TECHNOLOGY CO., LTD

TITLE		03 12.6mmL Pin( Chase lines).				
PART NO.		030000x10000G		DWG NO.		803-0001
APPROVED	CHECKED	DESIGNED	DRAWN	CUST NO.		
		Seamus 2008.07.07	Aaron 2008.07.07			Tolerance
						X. ±0.50
						X.X ±0.30
						X.XX ±0.10
						X° ±1°
				SHEET: 01/01	REV.: B	