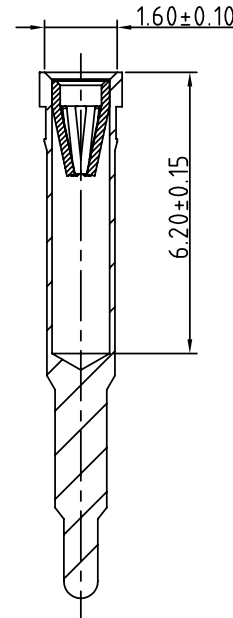
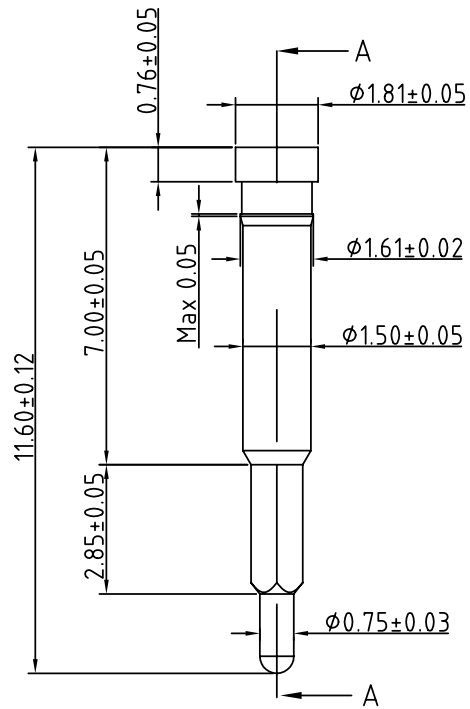
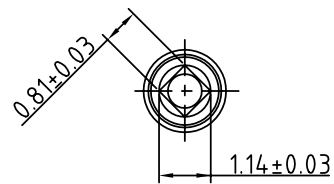


SIGN	DATE	DESCRIPTION	APPROVER
△			
THIS IS CAD DRAWING, DO NOT REVISE MANUALLY!!!			



SECTION A--A



Technical Data:

Material:

- Pin (outer sieve) : Brass,machined, CuZn38Pb2.
- Plating(outer sleeve) : Cu 40μ"-80μ"+Ni 50μ"-80μ"+Sn 200μ"-240μ".
- Dimension of exterior diameter added 0.0145-0.020mm after plating.
- Dimension of internal diameter reduced 0.0145-0.020mm after plating.

**ANYTEK**

**INSPECTION COPY**

ALL RIGHTS RESERVED. REPRODUCTION OR ISSUE TO THIRD PARTIES IN ANY FORM WHATSOEVER IS NOT PERMITTED WITHOUT WRITTEN AUTHORITY FROM THE PROPRIETOR. PROPERTY OF ANYTEK TECHNOLOGY CO., LTD

TITLE		OW Series Standard sleeve spec L:11.60mm				
PART NO.		OW6000x00000G		DWG NO.		OW0001
APPROVED	CHECKED	DESIGNED	DRAWN	CUST NO.		Tolerance
		Seamus 2006.02.25	Aaron 2006.02.25			X. ±0.50
						UNIT: mm
				SHEET: 01/01		X.XX ±0.10
				REV.: B		X° ±1°