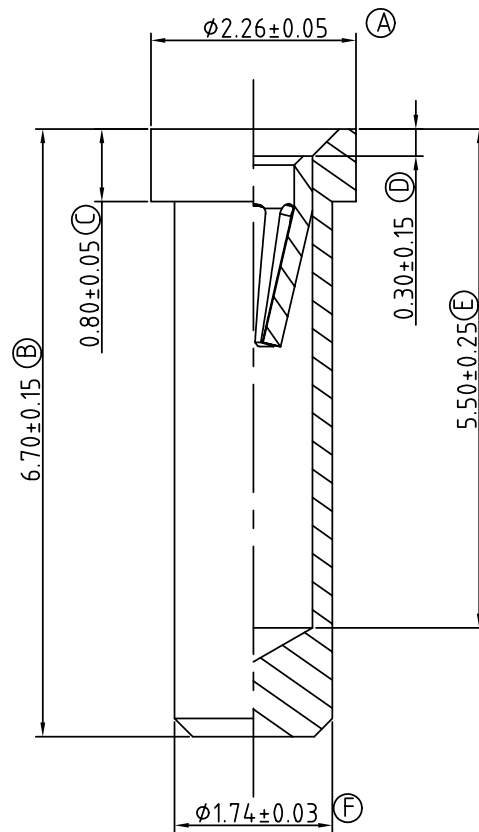
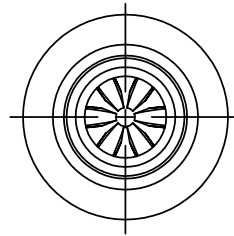


SIGN	DATE	DESCRIPTION	APPROVER
△			
THIS IS CAD DRAWING, DO NOT REVISE MANUALLY!!!			



Technical Data:

Material:

- Pin (outer sleeve) : Brass,machined,CuZn38pB2
- Clip (contact 6 finger) : BeCu.heat treated.
- Plating(Outer sleeve) : Tin plated:2um/80u"nickel,5um/200u" Gold plated:2um/80u"nickel,Full gold flash
- Plating(contact) : 2um/80u"nickel,gold or tin plating.

Electrical

- Current rating: 3Amps/contact max
- Contact resistance: <=4mΩ/contact

Mechanical

- Maximum Insertion force with solid pin of  $\phi 0.66\text{mm}$ : 125g
- Minimum Withdrawal force with solid pin of  $\phi 0.66\text{mm}$ : 40g

O T X 0 0 0 X 1 0 0 0 0 G

Code	Definition
6	6 finger

Code	Clip plated	Pin plated
0	Gold flash	Tin 200u"
1	Gold 10u"	Tin 200u"
2	Gold 30u"	Tin 200u"
3	Tin 200u"	Tin 200u"
4	Gold flash	Gold flash
5	Gold 10u"	Gold flash
6	Gold 30u"	Gold flash

# ANYTEK

## CUSTOMER COPY

ALL RIGHTS RESERVED. REPRODUCTION OR ISSUE TO THIRD PARTIES IN ANY FORM WHATSOEVER IS NOT PERMITTED WITHOUT WRITTEN AUTHORITY FROM THE PROPRIETOR. PROPERTY OF ANYTEK TECHNOLOGY CO., LTD

TITLE		OT 6.70mm PIN			
PART NO.		OT6000X10000G		DWG NO. 80T0001	
APPROVED	CHECKED	DESIGNED	DRAWN	CUST NO.	
		Seamus 2006.12.21	Aaron 2006.12.20		
				Tolerance	
				X.	±0.50
				X.X	±0.30
				X.XX	±0.10
				X°	±1°
				UNIT: mm	
				SCALE: NONE	
				SHEET: 01/01	REV.: B