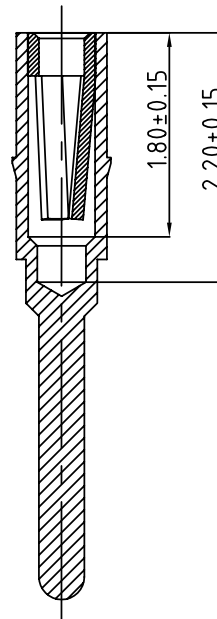
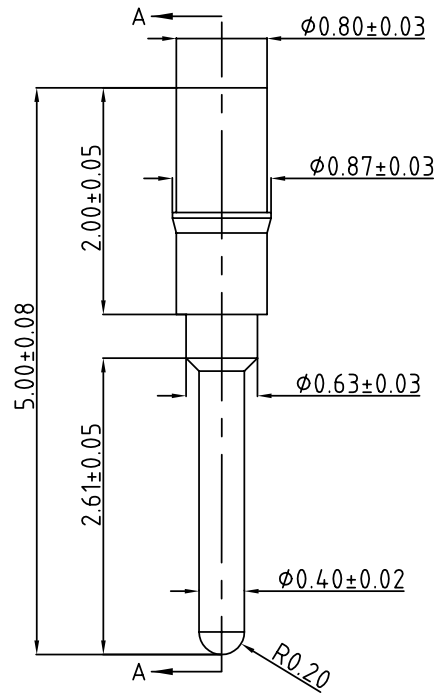
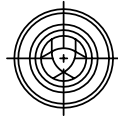


SIGN	DATE	DESCRIPTION	APPROVER
△			
<i>THIS IS CAD DRAWING, DO NOT REVISE MANUALLY!!!</i>			



SECTION A-A

NOTES:

1. Material: Sleeve: Brass; Clip: BeCu #172
2. Plating: Sleeve Cu80u"+Ni50u"+Sn240u"; Clip: Ni50u" + Au1u"-3u"
3. INSERTION FORCE WITH 0.28 DIA TEST PROBE 30 GRAMS MAX.
4. WITHDRAWAL FORCE WITH 0.28 DIA TEST PROBE 9 GRAMS MIN  
MAX PIN DIA ACCEPTED 0.33

<b>ANYTEK</b>				<b>CUSTOMER COPY</b>			
ALL RIGHTS RESERVED. REPRODUCTION OR ISSUE TO THIRD PARTIES IN ANY FORM WHATSOEVER IS NOT PERMITTED WITHOUT WRITTEN AUTHORITY FROM THE PROPRIETOR. PROPERTY OF ANYTEK TECHNOLOGY CO., LTD							
TITLE		OS 5.0mL PIN ???.					
PART NO.		OS3000x10000G			DWG NO.		80S0002
APPROVED		CHECKED	DESIGNED	DRAWN	CUST NO.		Tolerance
			Seamus 2004.11.22	Aaron 2004.11.20			X. ±0.50 X.X ±0.30 X.XX ±0.10 X° ±1°
					SHEET: 01/01		UNIT: mm SCALE: NONE REV.: B