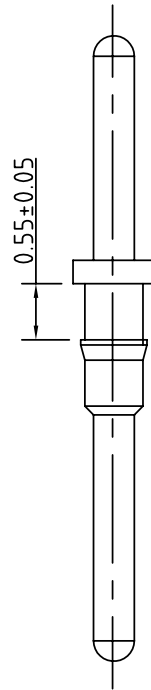
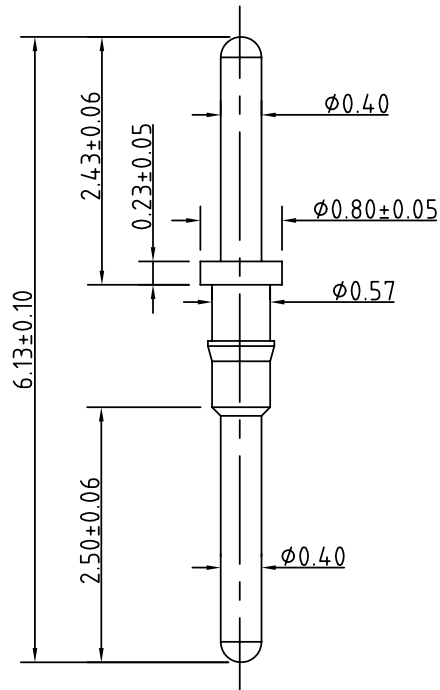
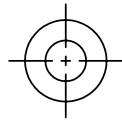


SIGN	DATE	DESCRIPTION	APPROVER
△	2009.11.07	結構變更	Seamus
THIS IS CAD DRAWING, DO NOT REVISE MANUALLY!!!			



Technical Data:

Material:

- Pin (outer sieve) : Brass,machined, C3604-BD
- Plating(outer sleeve) : Tin plated: Cu 40 u"+Ni 80 u"+Sn 200 u"
Gold plated: Cu 50u"+Ni 80u"+Au 1u"-3u".
- Dimension of exterior diameter added 0.016mm after plating.
- Dimension of internal diameter reduced 0.016mm after plating.
- Ordering information:

ANYTEK

INSPECTION COPY

ALL RIGHTS RESERVED. REPRODUCTION OR ISSUE TO THIRD PARTIES IN ANY FORM WHATSOEVER IS NOT PERMITTED WITHOUT WRITTEN AUTHORITY FROM THE PROPRIETOR. PROPERTY OF ANYTEK TECHNOLOGY CO., LTD

TITLE	OL Stagger adapter pin L:10.00mm						
PART NO.	OL0000x00000G			DWG NO.	OM0102		
APPROVED	CHECKED	DESIGNED	DRAWN	CUST NO.	Tolerance		
	Seamus 2009.12.02	Seamus 2009.12.02	Aaron 2006.07.28			UNIT: in	X. ±0.50
						SCALE: NONE	X.X ±0.30
				SHEET: 01/01	REV.: B	X.XX ±0.10	X° ±1°