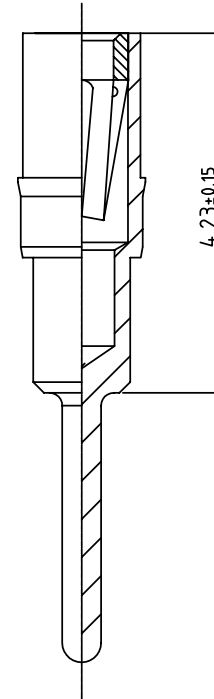
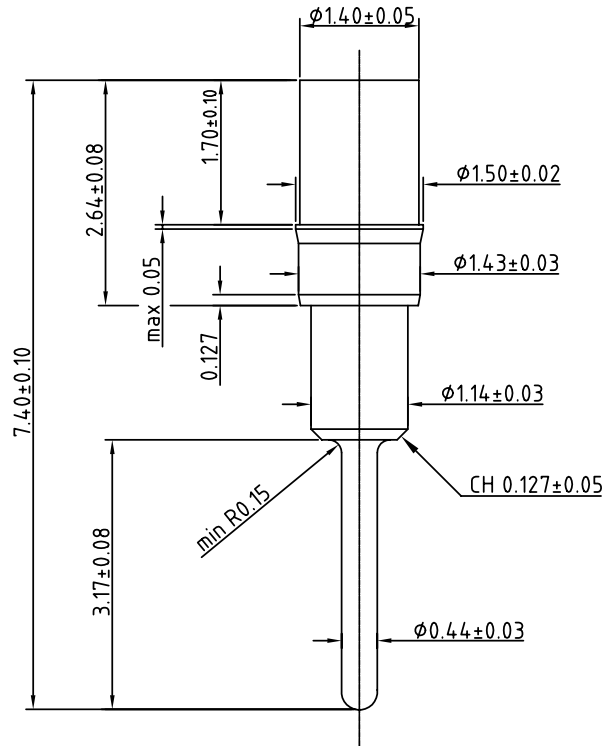
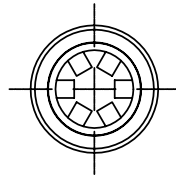


SIGN	DATE	DESCRIPTION	APPROVER
△			
THIS IS CAD DRAWING, DO NOT REVISE MANUALLY!!!			



Materials

- Sleeve: Screw-machined brass
- Clip: Stamped beryllium-copper
- Clips : 6 contacts
- Average insertion force steel pin of  $\phi 0.43\text{mm}$  <80g
- Average with-drawal force steel pin of  $\phi 0.43\text{mm}$  >15g
- Plug in range of male contact : Min  $\phi 0.41$  & Max  $\phi 0.56$
- Mechanical life : min 200 cycle
- Maximum current : 3A
- Contact resistance : max. 4m Ohm
- plating:
- 1.Sleeve plated :  
Ni 80-160u" + Sn 200u"  
or Ni 80-160u" + G/F
- 2.Clip plated:  
Ni 50u" + Au 3u"

OB6000 X 00000G

Code	Clip plated	Pin plated
0	Gold flash	Tin 200u"
1	Gold 10u"	Tin 200u"
2	Gold 30u"	Tin 200u"
3	Tin 200u"	Tin 200u"
4	Gold flash	Gold flash
5	Gold 10u"	Gold flash
6	Gold 30u"	Gold flash

**ANYTEK**

**CUSTOMER COPY**

ALL RIGHTS RESERVED. REPRODUCTION OR ISSUE TO THIRD PARTIES IN ANY FORM WHATSOEVER IS NOT PERMITTED WITHOUT WRITTEN AUTHORITY FROM THE PROPRIETOR. PROPERTY OF ANYTEK TECHNOLOGY CO., LTD

TITLE		OB series staggered pin L:7.40mm			
PART NO.	OB6000X00000G	DWG NO.	80B0001		
APPROVED	CHECKED	DESIGNED	DRAWN	CUST NO.	Tolerance
		Seamus 2004.11.22	Aaron 2004.11.20		X. ±0.50 X.X ±0.30 X.XX ±0.10 X° ±1°
				UNIT: mm SCALE: NONE SHEET: 01/01	REV.: B