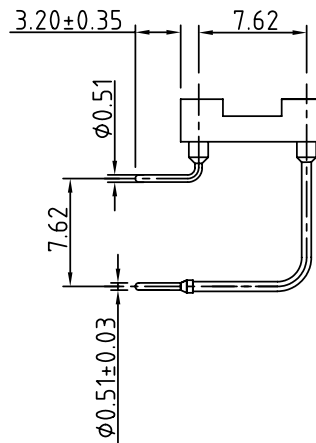
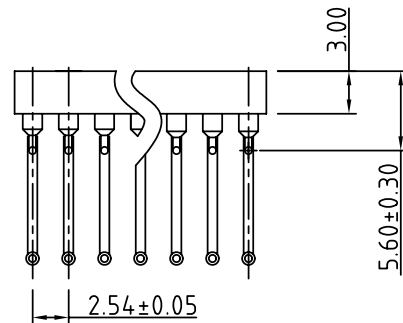
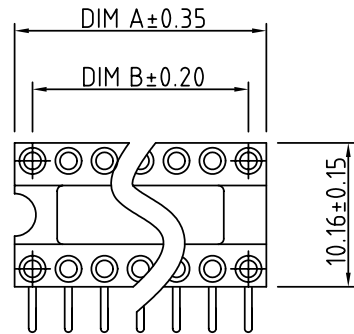
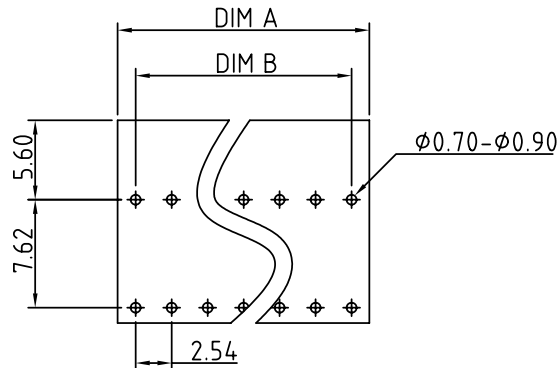


SIGN	DATE	DESCRIPTION	APPROVER
△			

THIS IS CAD DRAWING, DO NOT REVISE MANUALLY!!!



P.C.B. LAYOUT



Contact	DIM A	DIM B	Contact	DIM A	DIM B
06	7.62	5.08	18	22.86	20.32
08	10.16	7.62			
10	12.70	10.16			
14	17.78	15.24			
16	20.32	17.78			

Technical Data:

Material:

- Pin (outer sieve) : Brass,machined, CuZn38Pb2
- Clip(contact 4 finger):Beryllium copper,heat treated or PHBZ
- Plating(outer sleeve) : Tin plated:2μm/80μ"nickel,5μm/200μ"Tin  
Gold plated:2μm/80μ"nickel,Full gold
- Plating(contact):2μm/80μ"nickel,gold or Tin plating
- Insulator body(housing) :Glass filled thermoplastic Polyester UL94V-0

Electrical

- Current rating : 3 Amps/contact max.
- Contact resistance : <4mΩ/contact
- Insulation resistance: >10000MΩ at V=500VAC
- Operating : 60 vac/DC

Mechanical

- Operating temperature: Gold plated:-55°C to +125°C (continuous) Tin plated:-40°C to +105°C
- Average insertion force : <250g with steel pin of φ0.43mm/0.017"
- Average withdrawal : >50g force with steel pin of φ0.43mm/0.017"
- Mechanical life : min.200
- Soldering temperture : +260°C,10s max.

Ordering information:

SF - XX 3 2 X 00000G

pin plated: Code	Clip plated	Pin plated
0	Gold Flash	Tin 200u"
1	Gold 10u"	Tin 200u"
2	Gold 30u"	Tin 200u"
3	Tin 200u"	Tin 200u"
4	Gold flash	Gold flash
5	Gold 10u"	Gold flash
6	Gold 30u"	Gold flash

No.of contacts : 06-28

**ANYTEK**

**CUSTOMER COPY**

ALL RIGHTS RESERVED. REPRODUCTION OR ISSUE TO THIRD PARTIES IN ANY FORM WHATSOEVER IS NOT PERMITTED WITHOUT WRITTEN AUTHORITY FROM THE PROPRIETOR. PROPERTY OF ANYTEK TECHNOLOGY CO., LTD

TITLE	SF 7.62mm(0.3) 90° Series (Open frame W/O bar )				
PART NO.	SFXX32X00000G			DWG NO.	8SF0311
APPROVED	CHECKED	DESIGNED	DRAWN	CUST NO.	Tolerance
		Seamus 2005.07.08	Seamus 2005.07.08		X. ±0.50 X.X ±0.30 X.XX ±0.10 X° ±1°
				UNIT: mm SCALE: NONE SHEET: 01/01	REV.: B