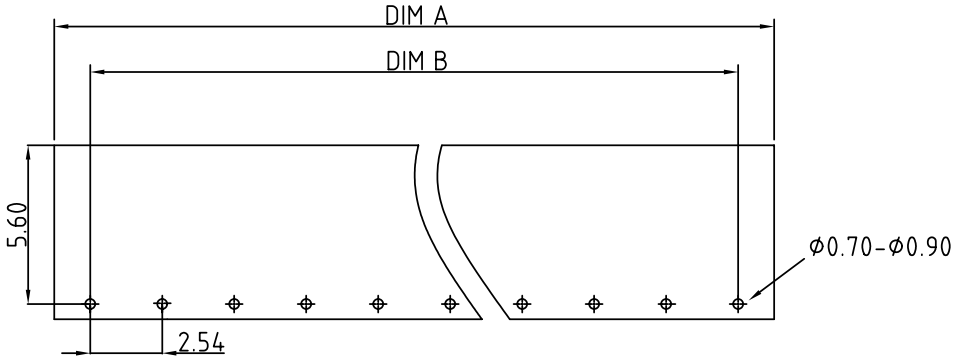
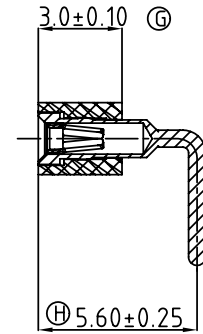
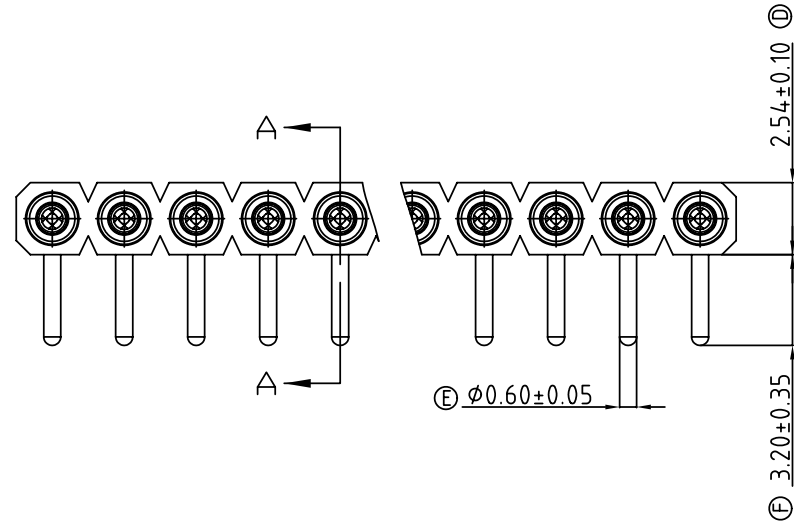
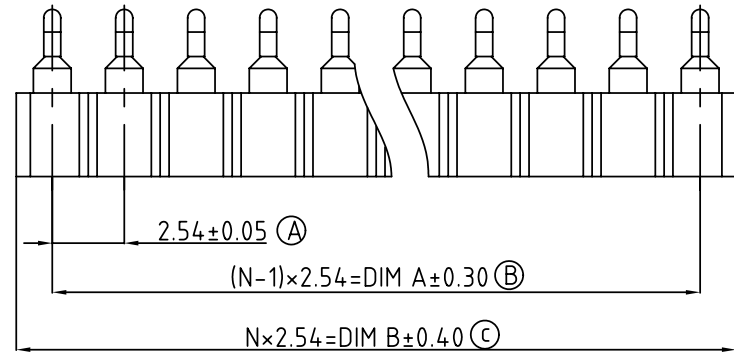


SIGN	DATE	DESCRIPTION	APPROVER
△			
THIS IS CAD DRAWING, DO NOT REVISE MANUALLY!!!			



P.C.B. LAYOUT

Technical Data:

Material:

- Pin (outer sleeve) : Brass,machined, CuZn38Pb2
- Clip(contact 4 finger):Beryllium copper,heat treated
- Plating(outer sleeve) : Tin plated:2μm/80μ"nickel,5μm/200μ"Tin
Gold plated:2μm/80μ"nickel,Full gold

- Plating(contact):2μm/80μ"nickel,gold or Tin plating
- Insulator body(housing) : Glass filled polyester (UL94V-0)

Electrical

- Current rating : 3 Amps/contact max.
- Contact resistance : <4mΩ/contact
- Insulation resistance : >10000MΩ at 500VAC
- Rated voltage :100 VRMS/150Vdc

Mechanical

- Operating temperature: Gold plated:-55°C to +125°C (continuous) Tin plated:-40°C to +105°C
- Average insertion force : <250g with steel pin of φ0.43mm/0.017"
- Average withdrawal :>50g force with steel pin of φ0.43mm/0.017"
- Mechanical life : min.200
- Soldering temperture : +260°C,10s max.

Ordering information:

SF - XX 0 0 X 0 0000G

No.of contacts : 01-40

pin plated: Code	Clip plated	Pin plated
0	Gold Flash	Tin 200u"
1	Gold 10u"	Tin 200u"
2	Gold 30u"	Tin 200u"
3	Tin 200u"	Tin 200u"
4	Gold flash	Gold flash
5	Gold 10u"	Gold flash
6	Gold 30u"	Gold flash

ANYTEK

CUSTOMER COPY

ALL RIGHTS RESERVED. REPRODUCTION OR ISSUE TO THIRD PARTIES IN ANY FORM WHATSOEVER IS NOT PERMITTED WITHOUT WRITTEN AUTHORITY FROM THE PROPRIETOR. PROPERTY OF ANYTEK TECHNOLOGY CO., LTD

TITLE		SF L:9.86mm Pin折彎90°單排IC/SKT成品圖.			
PART NO.	SFXX00X00000G	DWG NO.	8SF0001		
APPROVED	CHECKED	DESIGNED	DRAWN	CUST NO.	Tolerance
		Seamus 2005.05.10	Aaron 2004.11.20		X. ±0.50 X.X ±0.30 X.XX ±0.10 X* ±1*
		SHEET: 01/01		UNIT: mm SCALE: NONE REV.: B	