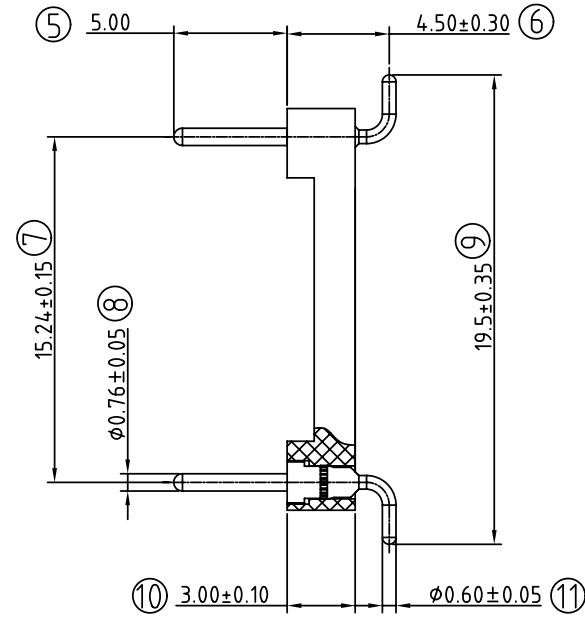
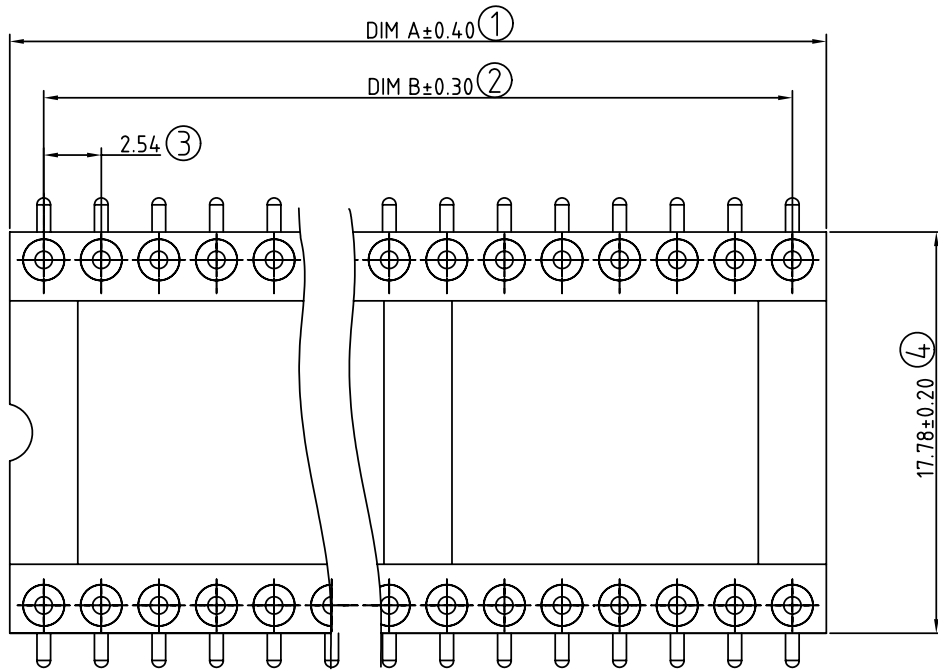


SIGN	DATE	DESCRIPTION	APPROVER
△			
THIS IS CAD DRAWING, DO NOT REVISE MANUALLY!!!			



**RB Series
Technical Data**

- ◆ **Material:**
 - Pin (outer sleeve) : Brass,machined, CuZn38Pb2
 - Pin (inner sleeve) : Tin plated : 2um/80u"nickel,5um/200u"Tin
 - Plating : Gold plated: 2um/80 u"nickel,full gold
- ◆ **Insulator body(black) :** Glass filled polyester UL94V-0
- ◆ **Electrical**
 - Current rating : 3 Amps/contact max.
 - Insulation resistance : ≥10000Mwat 500VAC
 - Rated voltage : 100 VRMS /150VDC
- ◆ **Mechanical**
 - Operating temperature : Gold plated: -550°C to +125°C
 - (Continuous) -67° F to +257° F
 - Tin plated: -40 °C to +105°C
- ◆ **Applications and features:**
 - 1.The male header contacts are designed for "Sandwich application" because The pin of $\phi 0.5\text{mm}/0.050''$ can be plugged into a standard IC-contact.
 - 2.3 different heights are available.
 - 3.Low profile type..
 - 4.Side and end stackable.
 - 5.Twist free construction.
- ◆ **Environmental data**
 - Solderability (IEC 60068-2-20. Ta) :235° C, 2s
 - Resistance to soldering heat (IEC 60068-2-20. Tb) :
 - Through hole mount components :260° C, 10s

P/N	Contact	Dim A	Dim B
RB2460X20000G	24	30.48	27.94
RB2860X20000G	28	35.56	33.02
RB3260X20000G	32	40.64	38.10
RB3660X20000G	36	45.72	43.18
RB4060X20000G	40	50.80	48.26
RB4260X20000G	42	53.34	50.80
RB4860X20000G	48	60.96	58.42
RB5060X20000G	50	63.50	60.96
RB5260X20000G	52	66.04	63.50

Ordering information

RB - XX 6 0 X 20000G

- pin plated- 0: Tin 200u"
- 1: Gold flash
- 2: Gold 10u"
- 3: Gold 30u"

No.of contacts : 24-52

ANYTEK

CUSTOMER COPY

ALL RIGHTS RESERVED. REPRODUCTION OR ISSUE TO THIRD PARTIES IN ANY FORM WHATSOEVER IS NOT PERMITTED WITHOUT WRITTEN AUTHORITY FROM THE PROPRIETOR. PROPERTY OF ANYTEK TECHNOLOGY CO., LTD

TITLE		RB 折彎90° IC Socket 0.6型系列圖紙.				
PART NO.	RBXX60X20000G	DWG NO.	8RB0003			
APPROVED	CHECKED	DESIGNED	DRAWN	CUST NO.	Tolerance	
		Seamus 2006.05.04	Aaron 2006.05.04		X. ±0.50	
				UNIT: mm	X.X ±0.30	
				SCALE: NONE	X.XX ±0.10	
				SHEET: 01/01	X° ±1°	
				REV.: B		