

SIGN	DATE	DESCRIPTION	APPROVER
△			
THIS IS CAD DRAWING, DO NOT REVISE MANUALLY!!!			

Technical Data

Material:

Pin (outer sleeve) : Brass, machined, CuZn38Pb2
 Clip(contact 4 finger) : Beryllium copper ,heat treated or PHBZ
 Plating(outer sleeve) : Tin plated : 2um/80u"nickel,5um/200u"Tin
 Gold plated: 2um/80u"nickel,full gold
 Plating clip(contact): 2um/80 u"nickel,gold or tin plating
 Insulator body(black) : Glass filled Hi-temperature thermoplastic UL94V-0

Electrical

Current rating : 3 Amps/contact max.
 Contact resistance : 4m Ω/contact
 Insulation resistance : 10000M Ωat 500VAC
 Rated voltage : 100 VRMS /150VDC

Mechanical

Operating temperature : Gold plated:-55°C to +125°C
 (Continuous) -67°F to +105°F
 Tin plated:-40°Cto +105°C
 Average insertion force with steel pin of: Φ0.43mm/0.017" < 250g
 Average withdrawal force with steel pin of Φ 0.43mm/0.017" >50g
 Mechanical life : min.200

Applications and features:

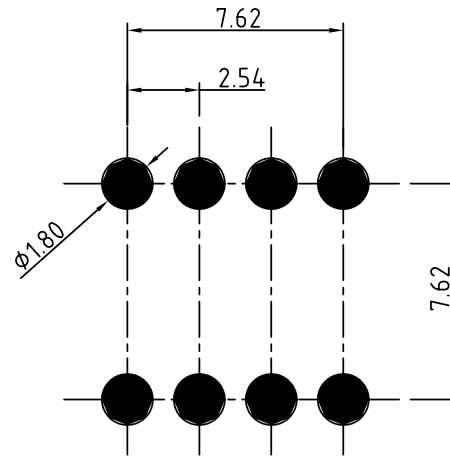
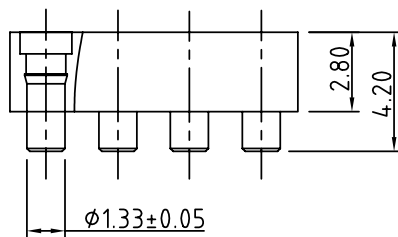
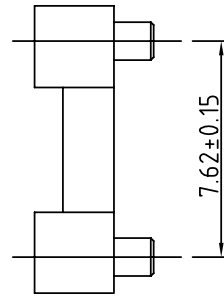
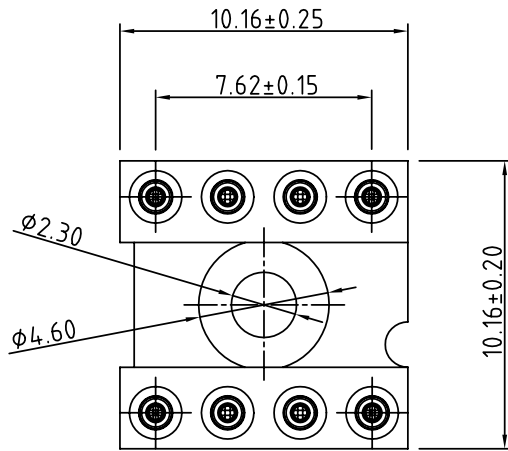
- 1.The open frame is most common type.
- 2.The open body design gives better access (for cleaning and inspections) to air -cooling.
- 3.Side and end stackable.
- 4.High retention design prevents IC walkout during heavy vibration.
- 5.Closed bottom sleeve for 100% anti-wicking of solder.
- 6.Twist free construction.

Environmental data

Solderability (IEC 60068-2-20. Ta) :235°C, 2s
 Resistance to soldering heat (IEC 60068-2-20. Tb) :
 -Through hole mount components :260°C, 10s

SE - 08 3 1 X 0 0100G

pin plated: Code	Clip plated	Pin plated
0	Gold Flash	Tin 200u"
1	Gold 10u"	Tin 200u"
2	Gold 30u"	Tin 200u"
3	Tin 200u"	Tin 200u"
4	Gold flash	Gold flash
5	Gold 10u"	Gold flash
6	Gold 30u"	Gold flash



P.C.B. LAYOUT

ANYTEK

CUSTOMER COPY

ALL RIGHTS RESERVED. REPRODUCTION OR ISSUE TO THIRD PARTIES IN ANY FORM WHATSOEVER IS NOT PERMITTED WITHOUT WRITTEN AUTHORITY FROM THE PROPRIETOR. PROPERTY OF ANYTEK TECHNOLOGY CO., LTD

TITLE		SE- 8P 7.62mm(0.3) Pin 4.2 mmL (closed frame)					
PART NO.		SE0831X00100G			DWG NO.		8SE0302-42
APPROVED	CHECKED	DESIGNED	DRAWN	CUST NO.		Tolerance	
		Aaron 2006.01.12	Aaron 2006.01.12			UNIT: mm	X. ±0.50
						SCALE: NONE	X.X ±0.30
						SHEET: 01/01	X.XX ±0.10
						REV.: B	X° ±1°