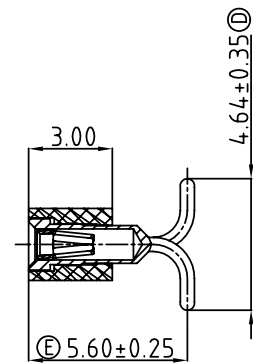
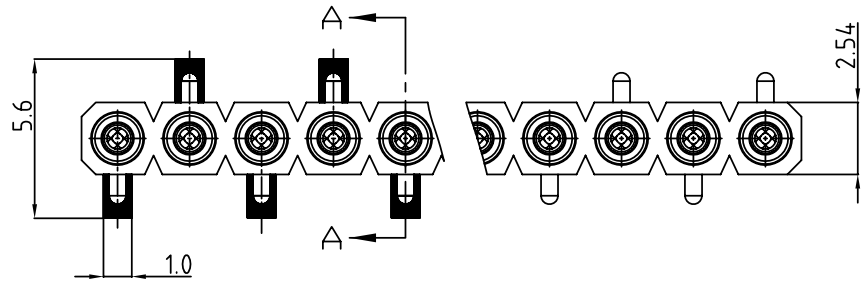
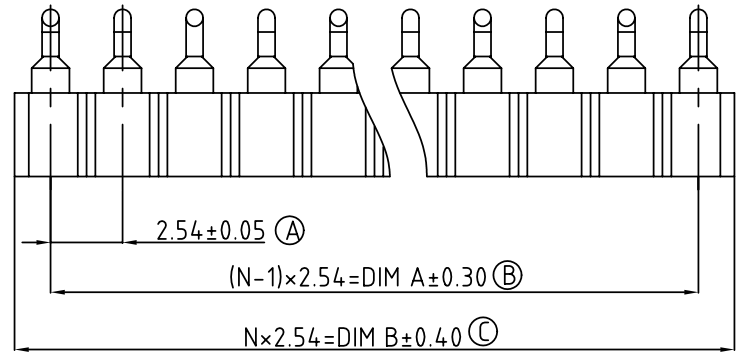


SIGN	DATE	DESCRIPTION	APPROVER
△			
THIS IS CAD DRAWING, DO NOT REVISE MANUALLY!!!			



SECTION A-A

- Material:
 - Pin (outer sleeve) : Brass,machined, CuZn38Pb2
 - Clip(contact 4 finger) : Beryllium copper ,heat treated or PHBZ
 - Plating(outer sleeve) : Tin plated : 2um/80u"nickel,5um/200u" Tin
Gold plated: 2um/80u"nickel,full gold
 - Plating clip(contact): 2um/80 u"nickel,gold or tin plating
 - Insulator body(black) : Glass filled Hi-temperature thermoplastic UL94V-0
- Electrical
 - Current rating : 3 Amps/contact max.
 - Contact resistance : < 4mΩ/contact
 - Insulation resistance : >10000MΩat 500VAC
 - Rated voltage : 100 VRMS /150VDC
- Mechanical
 - Operating temperature : Gold plated:-55°C to +125°C
(Continuous) -67°F to +105°F
Tin plated:-40°Cto +105°C
 - Average insertion force with steel pin of: 0.43mm/0.017" < 250g
 - Average withdrawal force with steel pin of 0.43mm/0.017" >50g
 - Mechanical life : min.200
- Environmental data
 - Solderability (IEC 60068-2-20. Ta) :235°C, 2s
 - Resistance to soldering heat (IEC 60068-2-20. Tb) :
-Through hole mount components :260°C, 10s

Ordering information

SE - XX 0 0 X 30100G

- pin plated- 0: Gold flash Tin 200u"
 - 1: Gold 10u" Tin 200u"
 - 2: Gold 30u" Tin 200u"
 - 3: Tin 200u" Tin 200u"
 - 4: Gold flash Gold flash
 - 5: Gold 10u" Gold flash
 - 6: Gold 30u" Gold flash
- No.of contacts : 01-40

Contact	Dim A	Dim B	Contact	Dim A	Dim B	Contact	Dim A	Dim B
01	2.54	—	15	38.10	35.56	29	73.66	71.12
02	5.08	2.54	16	40.64	38.10	30	76.20	73.66
03	7.62	5.08	17	43.18	40.64	31	78.74	76.20
04	10.16	7.62	18	45.72	43.18	32	81.28	78.74
05	12.70	10.16	19	48.26	45.72	33	83.82	81.28
06	15.24	12.70	20	50.80	48.26	34	86.36	83.82
07	17.78	15.24	21	53.34	50.80	35	88.90	86.36
08	20.32	17.78	22	55.88	53.34	36	91.44	88.90
09	22.86	20.32	23	58.42	55.88	37	93.98	91.44
10	25.40	22.86	24	60.96	58.42	38	96.52	93.98
11	27.94	25.40	25	63.50	60.96	39	99.06	96.52
12	30.48	27.94	26	66.04	63.50	40	101.60	99.06
13	33.02	30.48	27	68.58	66.04			
14	35.56	33.02	28	71.12	68.58			

ANYTEK				CUSTOMER COPY			
ALL RIGHTS RESERVED. REPRODUCTION OR ISSUE TO THIRD PARTIES IN ANY FORM WHATSOEVER IS NOT PERMITTED WITHOUT WRITTEN AUTHORITY FROM THE PROPRIETOR. PROPERTY OF ANYTEK TECHNOLOGY CO., LTD							
TITLE		SE L:7.42mm 單排IC/SKT成品圖.					
PART NO.		SEX00X30100G		DWG NO.		8SE0006	
APPROVED		CHECKED	DESIGNED	DRAWN	CUST NO.		Tolerance
			Seamus 2004.11.22	Aaron 2004.11.20	UNIT: mm SCALE: NONE SHEET: 01/01 REV.: B		X. ±0.50 X.X ±0.30 X.XX ±0.10 X* ±1°