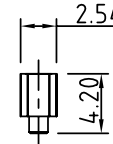
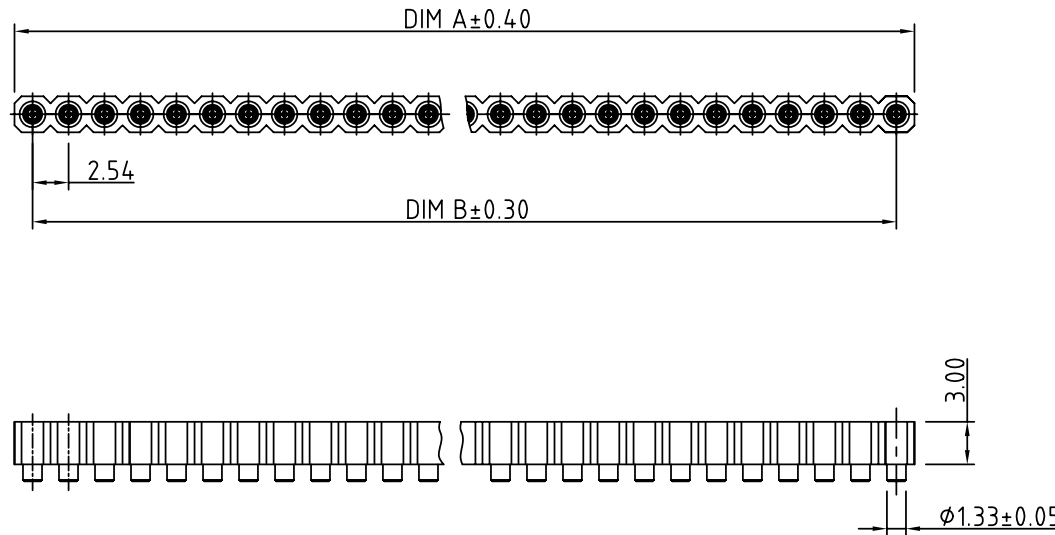


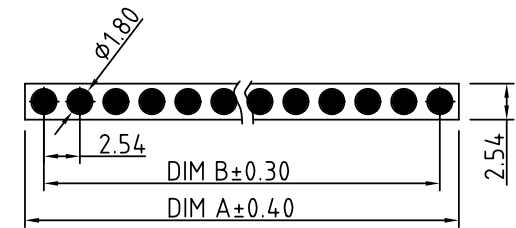
SIGN	DATE	DESCRIPTION	APPROVER
△			

THIS IS CAD DRAWING, DO NOT REVISE MANUALLY!!!

- Material:
  - Pin (outer sleeve) : Brass,machined, CuZn38Pb2
  - Clip(contact 4 finger) : Beryllium copper ,heat treated or PHBZ
  - Plating(outer sleeve) : Tin plated : 2um/80u"nickel,5um/200u" Tin  
Gold plated: 2um/80u"nickel,full gold
  - Plating clip(contact): 2um/80 u"nickel,gold or tin plating
  - Insulator body(black) : Glass filled Hi-temperature thermoplastic UL94V-0
- Electrical
  - Current rating : 3 Amps/contact max.
  - Contact resistance : < 4mΩ/contact
  - Insulation resistance : >10000MΩat 500VAC
  - Rated voltage : 100 VRMS /150VDC
- Mechanical
  - Operating temperature : Gold plated:-55°C to +125°C  
(Continuous) -67°F to +105°F  
Tin plated:-40°Cto +105°C
  - Average insertion force with steel pin of: 0.43mm/0.017" < 250g
  - Average withdrawal force with steel pin of 0.43mm/0.017" >50g
  - Mechanical life : min.200
- Environmental data
  - Solderability (IEC 60068-2-20. Ta) :235°C, 2s
  - Resistance to soldering heat (IEC 60068-2-20. Tb) :  
-Through hole mount components :260°C, 10s



Contact	DIM A	DIM B	Contact	DIM A	DIM B	Contact	DIM A	DIM B
01	2.54	—	15	38.10	35.56	29	73.66	71.12
02	5.08	2.54	16	40.64	38.10	30	76.20	73.66
03	7.62	5.08	17	43.18	40.64	31	78.74	76.20
04	10.16	7.62	18	45.72	43.18	32	81.28	78.74
05	12.70	10.16	19	48.26	45.72	33	83.82	81.28
06	15.24	12.70	20	50.80	48.26	34	86.36	83.82
07	17.78	15.24	21	53.34	50.80	35	88.90	86.36
08	20.32	17.78	22	55.88	53.34	36	91.44	88.90
09	22.86	20.32	23	58.42	55.88	37	93.98	91.44
10	25.40	22.86	24	60.96	58.42	38	96.52	93.98
11	27.94	25.40	25	63.50	60.96	39	99.06	96.52
12	30.48	27.94	26	66.04	63.50	40	101.6	99.06
13	33.02	30.48	27	68.58	66.04			
14	35.56	33.02	28	71.12	68.58			



P.C.B. LAYOUT

<b>ANYTEK</b>				<b>CUSTOMER COPY</b>			
ALL RIGHTS RESERVED. REPRODUCTION OR ISSUE TO THIRD PARTIES IN ANY FORM WHATSOEVER IS NOT PERMITTED WITHOUT WRITTEN AUTHORITY FROM THE PROPRIETOR. PROPERTY OF ANYTEK TECHNOLOGY CO., LTD							
TITLE		SE- Single row IC Sockets 4.2mmL PIN Series					
PART NO.		SEXX00X00100G		DWG NO.		8SE0701	
APPROVED		CHECKED		DESIGNED		DRAWN	
		Seamus 2005.11.05		Aaron 2005.11.03		CUST NO.	
						Tolerance	
						X. ±0.50	
						X.X ±0.30	
						X.XX ±0.10	
						X° ±1°	
				SHEET: 01/01		REV.: B	