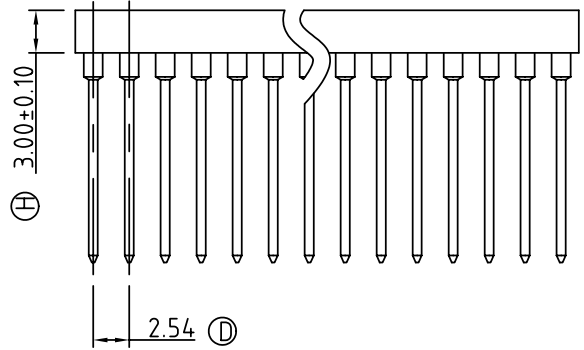
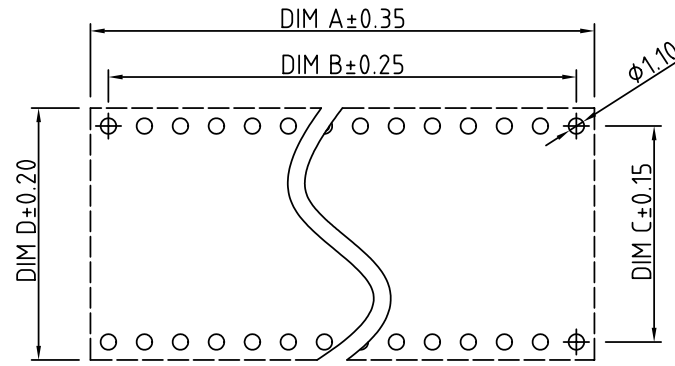
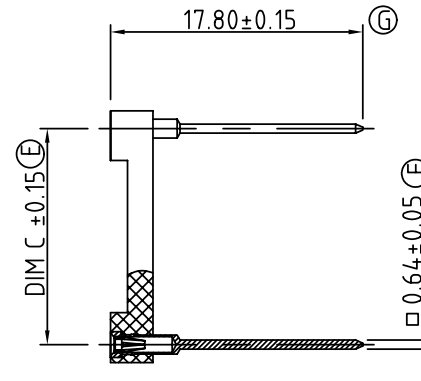
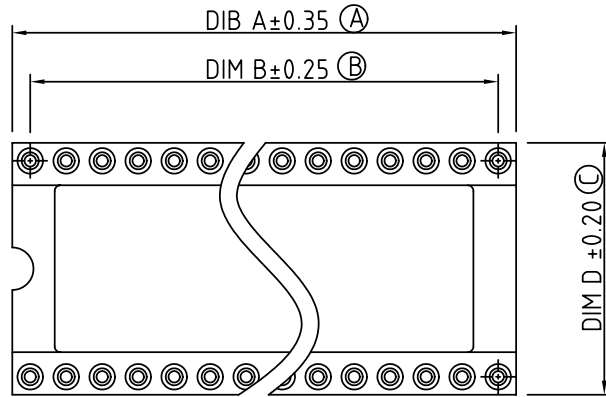


SIGN	DATE	DESCRIPTION	APPROVER
△	02/13'06	Part No. is changed.	Seamus
THIS IS CAD DRAWING, DO NOT REVISE MANUALLY!!!			



- Material:
- Pin (outer sleeve) : Brass,machined, CuZn38Pb2
  - Clip(contact 4 finger): PhBz.heat treated
  - Plating(outer sleeve) : Tin plated:2μm/80μ"nickel,5μm/200μ"Ti  
Gold plated:2μm/80μ"nickel,Full gold flash
  - Plating(contact): Gold plated: 2μm/80μ"nickel,Full gold flash
  - Insulator body(housing) : Glass filled thermoplastic polyester UL94V-0 Electrical
  - Current rating :3Amps/contact max.
  - Contact resistance: ≤4mΩ /contact
  - Insulation resistance : ≥10000MΩat 500VAC
  - Rated voltage : 100 VRMS /150VDC
- Mechanical
- Average insertion force with steel pin of φ0.43mm/.017"≤ 250gf
  - Average withdraw force with steel pin of φ0.43mm/.017"≥ 50gf
  - Mechanical life : min.200 cycle
  - Operating temperatures:  
(continuous) Gold plated: -55°C to +125°C -67°F to +257°F  
Tin plated: -40°C to +105°C
  - Soldering temperature: +260°C,10s max.

SD - XX X 2 X 3 0000G

No.of contacts :06p ~64p

Code	Definition	Clip plated	Pin plated
0		Gold Flash	Tin 200u"
1		Gold 10u"	Tin 200u"
2	7.62/.300"	Gold 30u"	Tin 200u"
3	10.16/.400"	Tin 200u"	Tin 200u"
4	15.24/.600"	Gold flash	Gold flash
5	22.86/.900"	Gold 10u"	Gold flash
6		Gold 30u"	Gold flash

P/N	Contact	Dim A	Dim B	Dim C	Dim D
SA0630X0XXXXG	6	7.62	5.08	7.62	10.16
SA0830X0XXXXG	8	10.16	7.62	7.62	10.16
SA1030X0XXXXG	10	12.70	10.16	7.62	10.16
SA1430X0XXXXG	14	17.78	15.24	7.62	10.16
SA1630X0XXXXG	16	20.32	17.78	7.62	10.16
SA1830X0XXXXG	18	22.86	20.32	7.62	10.16
SA2030X0XXXXG	20	25.40	22.86	7.62	10.16
SA2462X0XXXXG	24	30.48	27.94	15.24	17.78
SA2862X0XXXXG	28	35.56	33.02	15.24	17.78
SA3262X0XXXXG	32	40.64	38.10	15.24	17.78
SA4262X0XXXXG	40	50.80	48.26	15.24	17.78

## ANYTEK

**CUSTOMER COPY**

ALL RIGHTS RESERVED. REPRODUCTION OR ISSUE TO THIRD PARTIES IN ANY FORM WHATSOEVER IS NOT PERMITTED WITHOUT WRITTEN AUTHORITY FROM THE PROPRIETOR. PROPERTY OF ANYTEK TECHNOLOGY CO., LTD

TITLE		SD 17.80mmL finished products series ( Open frame w/o bar )			
PART NO.	SDxxx2x30000G	DWG NO.	8SD0605		
APPROVED	CHECKED	DESIGNED	DRAWN	CUST NO.	Tolerance
		Aaron 2006.01.12	Aaron 2006.01.12		X. ±0.50 X.X ±0.30 X.XX ±0.10 X* ±1°
				UNIT: mm	
		SHEET: 01/01		SCALE: NONE	
				REV.: B	