

SIGN	DATE	DESCRIPTION	APPROVER
△			
THIS IS CAD DRAWING, DO NOT REVISE MANUALLY!!!			

Technical Data:

Material:

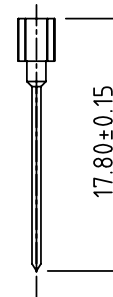
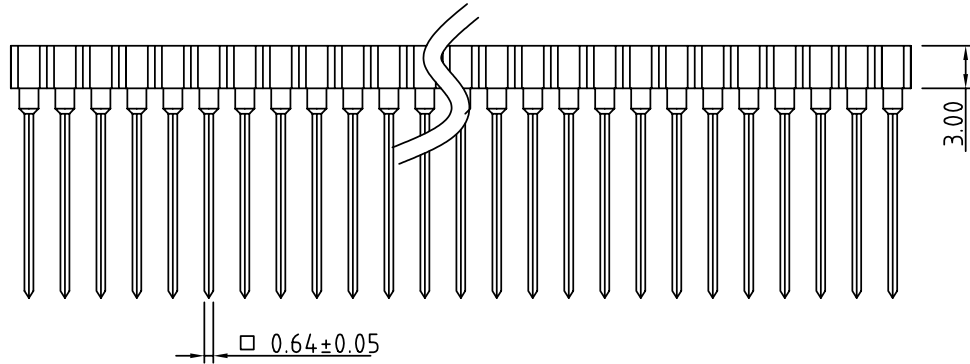
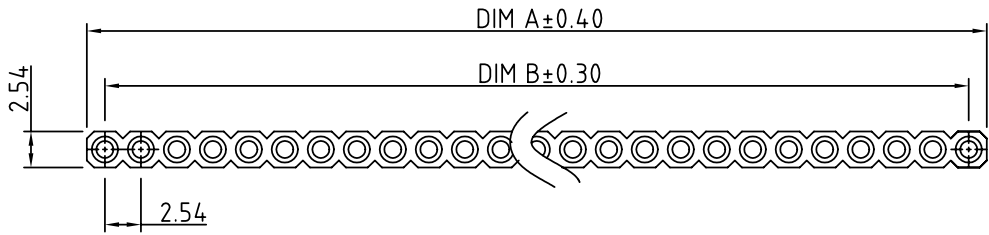
- Pin (outer sleeve) : Brass,machined, CuZn38Pb2
- Clip(contact 4 finger):Beryllium copper,heat treated
- Plating(outer sleeve) : Tin plated:2μm/80μ"nickel,5μm/200μ"Tin  
Gold plated:2μm/80μ"nickel,Full gold
- Plating(contact):2μm/80μ"nickel,gold or Tin plating
- Insulator body(housing) : Glass filled thermoplastic polyester UL94V-0

Electrical

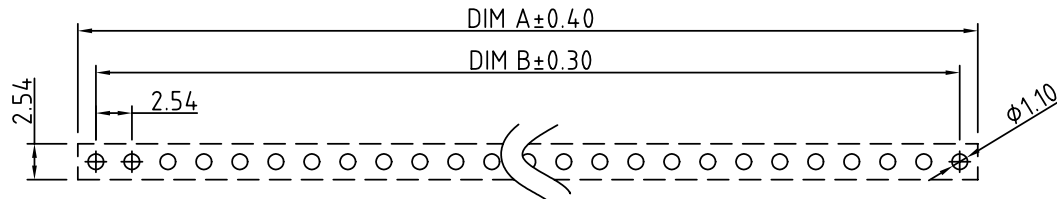
- Current rating : 3 Amps/contact max.
- Contact resistance : 4mΩ/contact
- Insulation resistance : 10000MΩat 500VAC
- Rated voltage : 100 VRMS /150VDC

Mechanical

- Operating temperature: Gold plated:-55°C to +125°C  
(continuous) Tin plated:-40°C to +105°C
- Average insertion force : <250g  
with steel pin of φ0.43mm/0.017"
- Average withdrawal :>50g  
force with steel pin of φ0.43mm/0.017"
- Mechanical life : min.200
- Soldering temperture : +260°C,10s max.



P.C.B LAYOUT



SD - XX 0 0 X 3 0000G

No.of contacts : 01 ~40

pin plated: Code	Clip plated	Pin plated
0	Gold Flash	Tin 200u"
1	Gold 10u"	Tin 200u"
2	Gold 30u"	Tin 200u"
3	Tin 200u"	Tin 200u"
4	Gold flash	Gold flash
5	Gold 10u"	Gold flash
6	Gold 30u"	Gold flash

Contact	Dim A	Dim B	Contact	Dim A	Dim B	Contact	Dim A	Dim B
01	2.54	—	15	38.10	35.56	29	73.66	71.12
02	5.08	2.54	16	40.64	38.10	30	76.20	73.66
03	7.62	5.08	17	43.18	40.64	31	78.74	76.20
04	10.16	7.62	18	45.72	43.18	32	81.28	78.74
05	12.70	10.16	19	48.26	45.72	33	83.82	81.28
06	15.24	12.70	20	50.80	48.26	34	86.36	83.82
07	17.78	15.24	21	53.34	50.80	35	88.90	86.36
08	20.32	17.78	22	55.88	53.34	36	91.44	88.90
09	22.86	20.32	23	58.42	55.88	37	93.98	91.44
10	25.40	22.86	24	60.96	58.42	38	96.52	93.98
11	27.94	25.40	25	63.50	60.96	39	99.06	96.52
12	30.48	27.94	26	66.04	63.50	40	101.60	99.06
13	33.02	30.48	27	68.58	66.04			
14	35.56	33.02	28	71.12	68.58			

<b>ANYTEK</b>				<b>CUSTOMER COPY</b>			
				ALL RIGHTS RESERVED. REPRODUCTION OR ISSUE TO THIRD PARTIES IN ANY FORM WHATSOEVER IS NOT PERMITTED WITHOUT WRITTEN AUTHORITY FROM THE PROPRIETOR. PROPERTY OF ANYTEK TECHNOLOGY CO., LTD			
TITLE		SD-Single row IC sockets Wire wrap pin17.8mmL series					
PART NO.		SDXX00X30000G		DWG NO.		8SD0001	
APPROVED		CHECKED		DESIGNED		DRAWN	
				Seamus 2005.12.01		Aaron 2005.07.27	
						Tolerance	
				SHEET: 01/01		UNIT: mm SCALE: NONE REV.: B	
						X. ±0.50 X.X ±0.30 X.XX ±0.10 X* ±1°	