


| SIGN | DATE | DESCRIPTION | APPROVER |
|--|----------|--------------------|----------|
| △ | 07/09'13 | update the drawing | Guoxue |
| THIS IS CAD DRAWING, DO NOT REVISE MANUALLY!!! | | | |

Materials

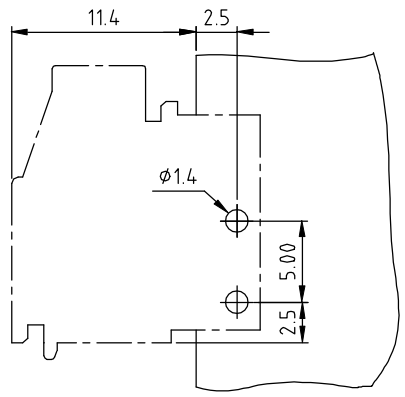
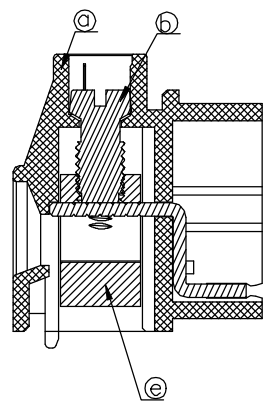
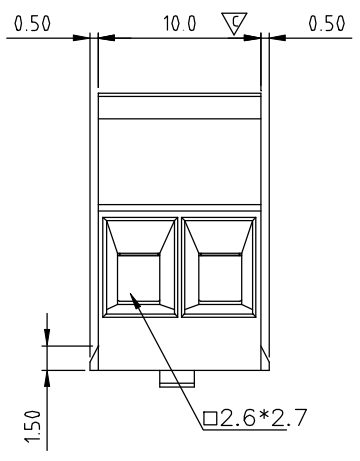
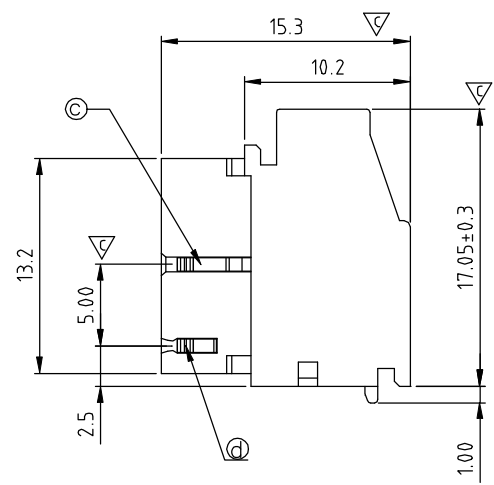
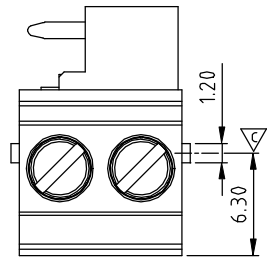
- Item a Terminal housing : Thermoplastic (UL94V-0)
- Item b Terminal screw : Steel Zinc plating "--" slot type
- Item c Wire guard solder pin 1 : Brass ,Tin plated
- Item d Wire guard solder pin 2 : Brass ,Tin plated
- Item e Clamp : Brass, Ni Plated

Electrical cULus

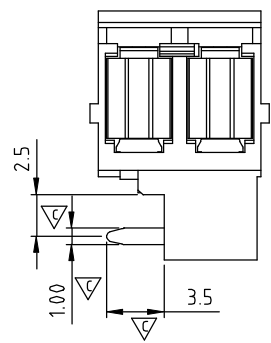
- Voltage rating: 300VAC
- Current rating: 10A
- Wire range:
 - Solid wire(AWG): 12-30
 - Stranded wire(AWG): 12-30
- Torque(Lb-In): 5.0
- Screw: M3
- Wire strip length: 7-8mm
- Withstanding Voltage: 1.6KV
- Operating temperature: -40°C to +115°C
- Soldering temperature: 260°C±5°C/5 Sec
- Safety Approval: 
- Critical dimension: ▽

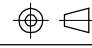
E6 02 0 1 x 1 xxxx G

- | | |
|---------------------|--|
| COLOR | RoHS compliant (lead<4%) In copper Alloy |
| 0 Black (RAL9005) | 0000: "@ Logo (Standard) |
| 2 Red (RAL3001/D) | 000A: "ANYTEK" Mark |
| 3 Orange(RAL2011/P) | Any special item by customer request. |
| 4 Yellow(RAL1018/A) | please contact sales department. |
| 5 Green(RAL6018/T) | |
| 6 Blue (RAL5015/A) | |
| 8 Grey(RAL7035/D) | |
| 9 White(RAL1102) | |
| C Green(RAL6018/U) | |



P.C.B Layout



| | | | | | | | | |
|---|--|-----------------------------------|--|----------------------|--|---|--|-----------|
| ANYTEK | | | | CUSTOMER COPY | | | | |
| ALL RIGHTS RESERVED. REPRODUCTION OR ISSUE TO THIRD PARTIES IN ANY FORM WHATSOEVER IS NOT PERMITTED WITHOUT WRITTEN AUTHORITY FROM THE PROPRIETOR. PROPERTY OF ANYTEK TECHNOLOGY CO., LTD | | | | | | | | |
| TITLE | | E6 5.0 SERIES 2P (Left) --Brass | | | | DWG NO. | | 8E60014 |
| PART NO. | | E60201x1xxxxG | | | | CUST NO. | | |
| APPROVED | | CHECKED | | DESIGNED | | DRAWN | | Tolerance |
| | | | | Guoxue 2013.07.19 | | Guoxue 2013.07.19 | | X. ±0.5 |
| | | | | | |  | | X.X ±0.3 |
| | | | | | | | | X.XX ±0.1 |
| | | | | | | SHEET: 01/01 | | X° ±1° |
| | | | | | | UNIT: mm | | |
| | | | | | | SCALE: NONE | | |
| | | | | | | REV.: C | | |