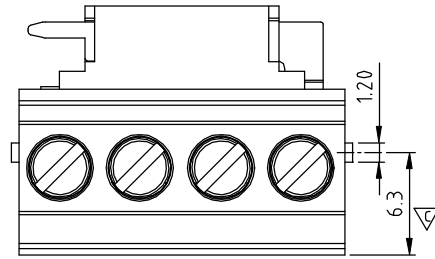


SIGN	DATE	DESCRIPTION	APPROVER
△	07/09'13	update the drawing	Guoxue
THIS IS CAD DRAWING, DO NOT REVISE MANUALLY!!!			



**Materials**

- Item a Terminal housing : Thermoplastic (UL94V-0)
- Item b Terminal screw : Steel Zinc plating "--" slot type
- Item c Wire guard solder pin 1 : Brass ,Tin plated
- Item d Wire guard solder pin 2 : Brass ,Tin plated
- Item e Wire guard solder pin 3 : Brass ,Tin plated
- Item f Wire guard solder pin 4 : Brass ,Tin plated
- Item g Clamp : Brass, Ni Plated

**Electrical cULus**

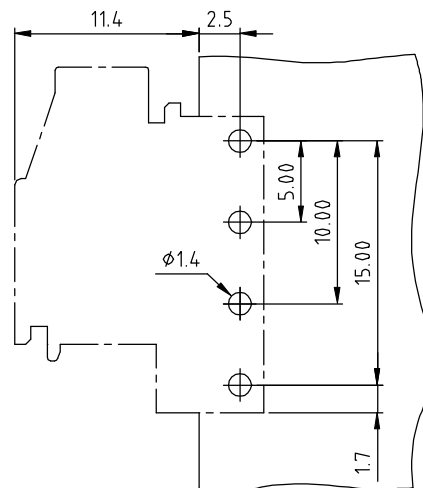
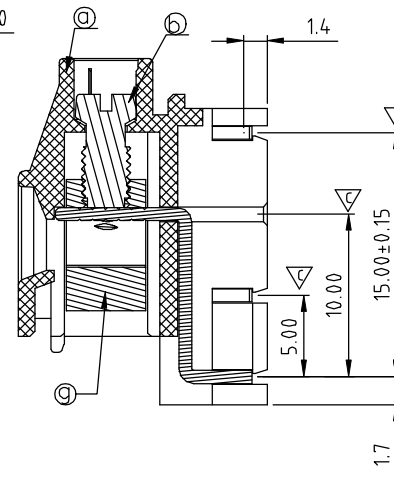
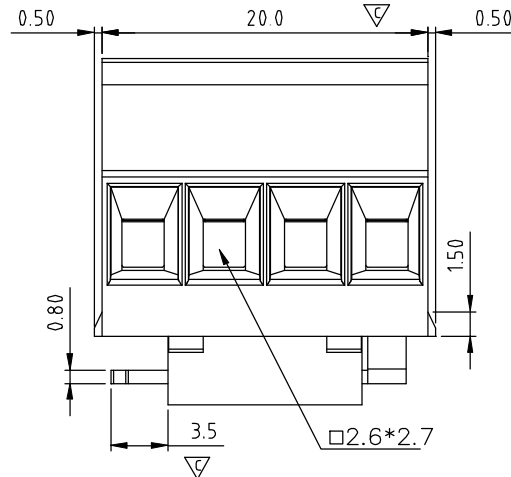
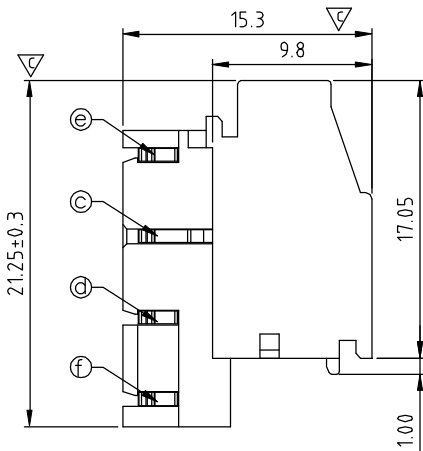
- Voltage rating: 300VAC
- Current rating: 10A
- Wire range:
- Solid wire(AWG): 12-30
- Stranded wire(AWG): 12-30
- Torque(Lb-In): 5.0
- Screw: M3
- Wire strip length: 7-8mm
- Withstanding Voltage: 1.6KV
- Operating temperature: -40°C to +115°C
- Soldering temperature: 260°C±5°C/5 Sec
- Safety Approval: us
- Critical dimension:

**E6 04 0 1 x 1 xxxx G**

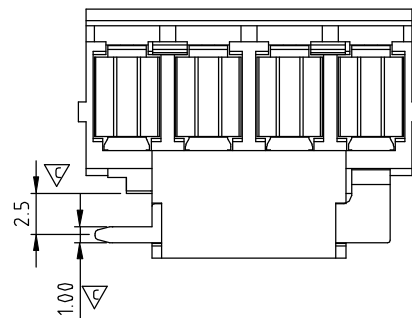
**COLOR**

- |                     |                                       |
|---------------------|---------------------------------------|
| 0 Black (RAL9005)   | 0000: "@ " Logo (Standard)            |
| 2 Red (RAL3001/D)   | 000A: "ANYTEK" Mark                   |
| 3 Orange(RAL2011/P) | Any special item by customer request. |
| 4 Yellow(RAL1018/A) | please contact sales department.      |
| 5 Green(RAL6018/T)  |                                       |
| 6 Blue (RAL5015/A)  |                                       |
| 8 Grey(RAL7035/D)   |                                       |
| 9 White(RAL1102)    |                                       |
| C Green(RAL6018/U)  |                                       |

G RoHS compliant (lead<4%)  
In copper Alloy



P.C.B Layout



<b>ANYTEK</b>		<b>CUSTOMER COPY</b>	
<small>ALL RIGHTS RESERVED. REPRODUCTION OR ISSUE TO THIRD PARTIES IN ANY FORM WHATSOEVER IS NOT PERMITTED WITHOUT WRITTEN AUTHORITY FROM THE PROPRIETOR. PROPERTY OF ANYTEK TECHNOLOGY CO., LTD</small>			
TITLE	E6 5.0 SERIES 4P (Left)--Brass		
PART NO.	E60401x1xxxxG	DWG NO.	8E60018
APPROVED	CHECKED	DESIGNED	DRAWN
		Guoxue 2013.07.19	Guoxue 2013.07.19
SHEET: 01/01		Tolerance	
UNIT: mm		X. ±0.5	
SCALE: NONE		X.X ±0.3	
		X.XX ±0.1	
		X° ±1°	