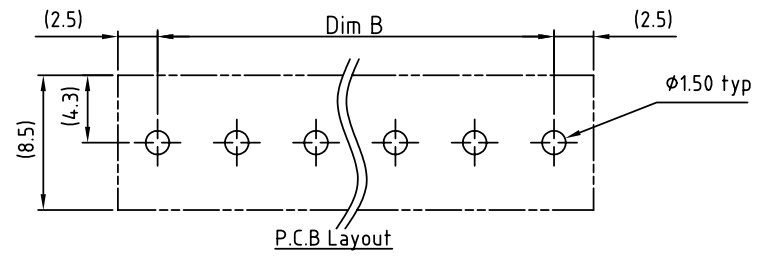
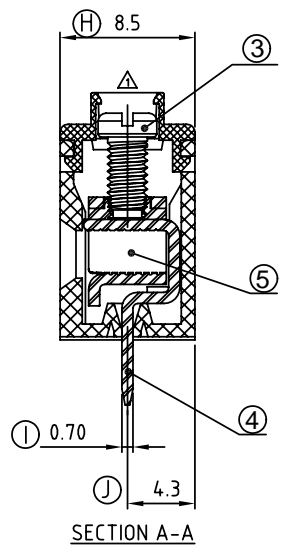
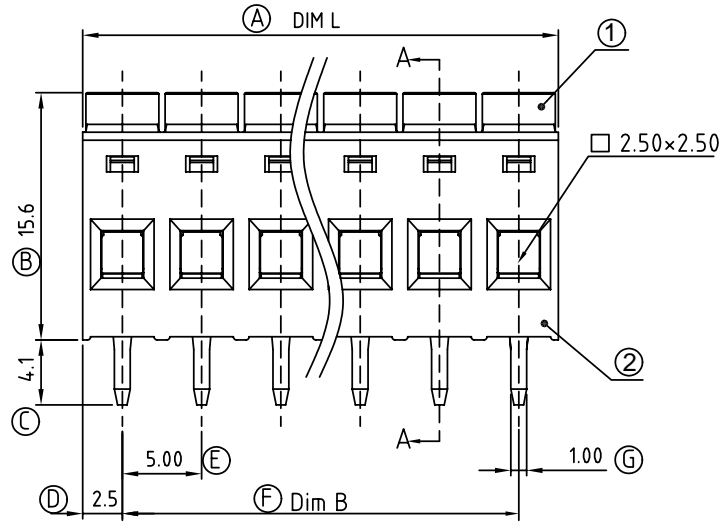
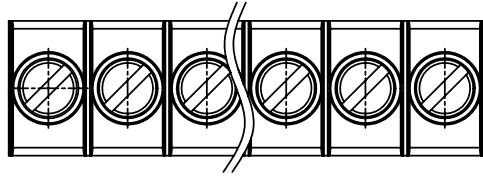


SIGN	DATE	DESCRIPTION	APPROVER
△	05/20.08	螺絲孔和螺絲進行改變	Aaron
△	05/20.08	增加cULus	Aaron

THIS IS CAD DRAWING, DO NOT REVISE MANUALLY!!!



Material

- Item ① Terminal cover :Thermoplastic (UL94V-0)
- Item ② Terminal housing : Thermoplastic (UL94V-0)
- Item ③ Terminal screw : Steel Zinc plating "-" slot type
- Item ④ Wire guard solder pin : Brass, Tin plated
- Item ⑤ Clamp : Steel stamping, Zinc plating

Electrical cULus

- Voltage rating: 300VAC
- Current rating: 10A
- Wire range:
- Solid wire(AWG): 12-22
- Stranded wire(AWG): 12-22
- Torque(Lb-In): 3.5
- Screw: M2.5
- Wire strip length: 6-7mm
- Withstanding Voltage: 1.6KV
- Operating temperature: -40°C to +115°C
- Soldering temperature: 250°C±10°C/5 Sec
- Safety Approval: US

PART NO.

EQ xx 05 x 1 xxxx G

Poles 02 2Contacts 03 3Contacts 24 24Contacts	Color 0 Black 5 Green (RAL 6018/T) 6 Blue 8 Grey (RAL 7035/D)	RoHS Pb<40,000ppm 0000 Standard @ Logo 000A Standard ANY Logo Any special item by customer request, please contact sales department.
---	---	---

Poles	02	03	04	05	06	07	08	09	10	11	12	13
Dim L	10.00	15.00	20.00	25.00	30.00	35.00	40.00	45.00	50.00	55.00	60.00	65.00
Dim B	5.00	10.00	15.00	20.00	25.00	30.00	35.00	40.00	45.00	50.00	55.00	60.00
TOL	±0.15						±0.20				±0.25	
Poles	14	15	16	17	18	19	20	21	22	23	24	
Dim L	70.00	75.00	80.00	85.00	90.00	95.00	100.0	105.0	110.0	115.0	120.0	
Dim B	65.00	70.00	75.00	80.00	85.00	90.00	95.00	100.0	105.0	110.0	115.0	
TOL	±0.25						±0.30					

ANYTEK				CUSTOMER COPY			
ALL RIGHTS RESERVED. REPRODUCTION OR ISSUE TO THIRD PARTIES IN ANY FORM WHATSOEVER IS NOT PERMITTED WITHOUT WRITTEN AUTHORITY FROM THE PROPRIETOR. PROPERTY OF ANYTEK TECHNOLOGY CO., LTD							
TITLE EQ 5.0 Series 180 D Wire inlet (Horizontal)							
PART NO. EQxx05x1xxxxG				DWG NO. 8EQ0001			
APPROVED		CHECKED		DESIGNED		DRAWN	
				Aaron 2007.05.20		Aaron 2007.05.20	
				CUST NO.		Tolerance	
						X. ±0.50	
						X.X ±0.30	
						X.XX ±0.10	
						X* ±1*	
				SHEET: 01/01		REV.: C	