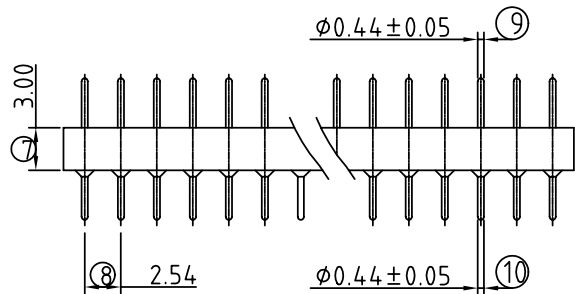
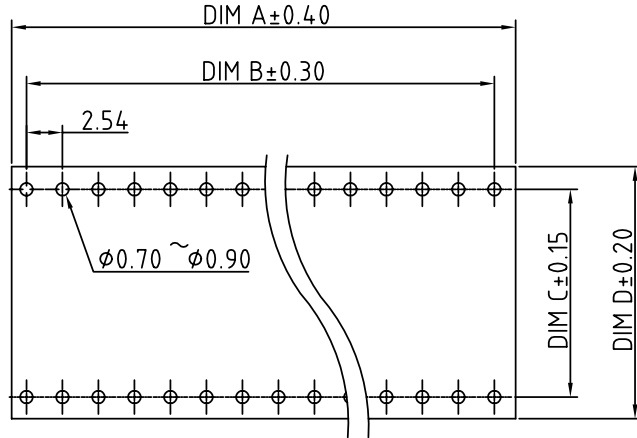
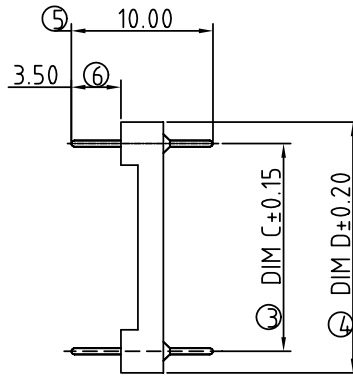
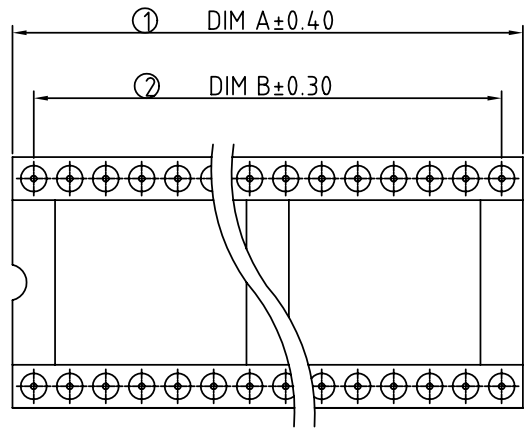


SIGN	DATE	DESCRIPTION	APPROVER
△	02/18'06	Part No. is changed	Aaron
<i>THIS IS CAD DRAWING, DO NOT REVISE MANUALLY!!!</i>			



P.C.B. LAYOUT

SB Series
Technical Data

- ◆ **Material:**
Pin (outer sleeve): Brass, machined, CuZn38Pb2
Plating: Tin plated: 2um/80u"nickel, 5um/200u" Tin
Gold plated: 2um/80 u"nickel, full gold
Insulator body (black): Glass filled polyester UL94V-0
- ◆ **Electrical**
Current rating: 3 Amps/contact max.
Insulation resistance: ≥10000MΩ at 500VAC
Rated voltage: 100 VRMS /150VDC
- ◆ **Mechanical**
Operating temperature: Gold plated: -550°C to +125°C
(Continuous) -67° F to +257° F
Tin plated: -40 °C to +105°C
- ◆ **Applications and features:**
1. The male header contacts are designed for "Sandwich application" because The pin of φ0.5mm/0.050" can be plugged into a standard IC-contact.
2. 3 different heights are available.
3. Low profile type.
4. Side and end stackable.
5. Twist free construction.
- ◆ **Environmental data**
Solderability (IEC 60068-2-20. Ta): 235° C, 2s
Resistance to soldering heat (IEC 60068-2-20. Tb): -Through hole mount components: 260° C, 10s

SB - XX X 0 X 0 0 0 0 0 G △

No. of contacts : 06p ~ 64p

Code	Definition	pin plated: Code	Pin plated
3	7.62/.300"	0	Tin 200u"
4	10.16/.400"	1	Gold flash
6	15.24/.600"	2	Gold 10u"
9	22.86/.900"	3	Gold 30u"

P/N	Contact	Dim A	Dim B	Dim C	Dim D	P/N	Contact	Dim A	Dim B	Dim C	Dim D
SB0630X0X	6	7.62	5.08	7.62	10.16	SB3240X0X	32	40.64	38.10	10.16	12.70
SB0830X0X	8	10.16	7.62	7.62	10.16	SB2460X0X	24	30.48	27.94	15.24	17.78
SB1030X0X	10	12.70	10.16	7.62	10.16	SB2860X0X	28	35.56	33.02	15.24	17.78
SB1430X0X	14	17.78	15.24	7.62	10.16	SB3260X0X	32	40.64	38.10	15.24	17.78
SB1630X0X	16	20.32	17.78	7.62	10.16	SB3660X0X	36	45.72	43.18	15.24	17.78
SB1830X0X	18	22.86	20.32	7.62	10.16	SB4060X0X	40	50.80	48.26	15.24	17.78
SB2030X0X	20	25.40	22.86	7.62	10.16	SB4260X0X	42	53.34	50.80	15.24	17.78
SB2430X0X	24	30.48	27.94	7.62	10.16	SB4860X0X	48	60.96	58.42	15.24	17.78
SB2830X0X	28	35.56	33.02	7.62	10.16	SB5060X0X	50	63.50	60.96	15.24	17.78
SB2040X0X	20	25.40	22.86	10.16	12.70	SB5260X0X	52	66.04	63.50	15.24	17.78
SB2240X0X	22	27.94	25.40	10.16	12.70	SB5090X0X	50	63.50	60.96	22.86	25.40
SB2440X0X	24	30.48	27.94	10.16	12.70	SB5290X0X	52	66.04	63.50	22.86	25.40
SB2840X0X	28	35.56	33.02	10.16	12.70	SB6490X0X	64	81.28	78.74	22.86	25.40

ANYTEK				CUSTOMER COPY			
ALL RIGHTS RESERVED. REPRODUCTION OR ISSUE TO THIRD PARTIES IN ANY FORM WHATSOEVER IS NOT PERMITTED WITHOUT WRITTEN AUTHORITY FROM THE PROPRIETOR. PROPERTY OF ANYTEK TECHNOLOGY CO., LTD							
TITLE		IC/SKT SB 10.00 mmL finished products series (Open frame)					
PART NO.		SBXXX0X00000G			DWG NO.		8SB0001
APPROVED	CHECKED	DESIGNED	DRAWN	CUST NO.		Tolerance	
		Aaron	Aaron			X.	±0.50
		2006.02.18	2006.02.18			X.X	±0.30
				UNIT: mm		X.XX ±0.10	
				SCALE: NONE		X* ±1*	
				SHEET: 01/01		REV.: C	