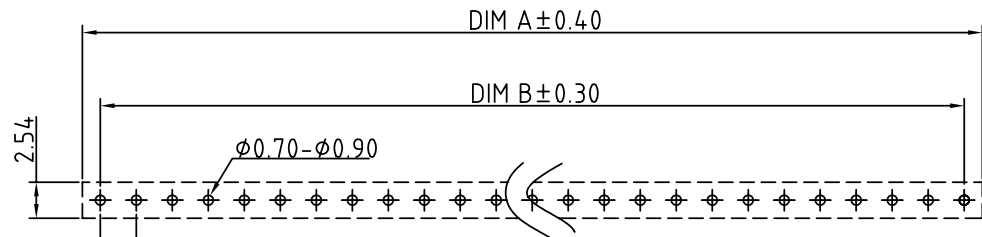
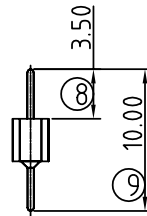
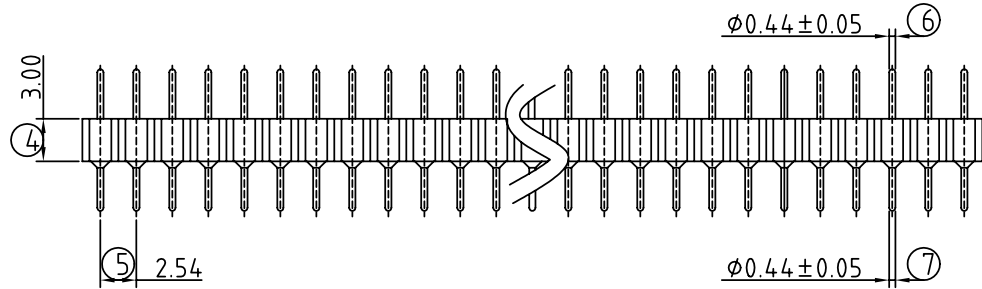
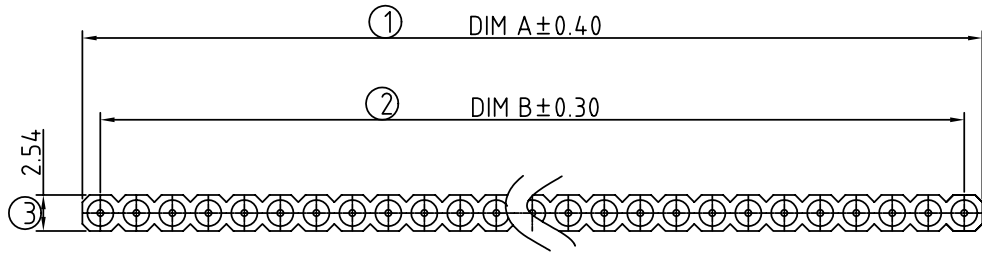


SIGN	DATE	DESCRIPTION	APPROVER
△	02/18'06	Part No. is changed	Aaron
<i>THIS IS CAD DRAWING, DO NOT REVISE MANUALLY!!!</i>			



P.C.B. LAYOUT

**SB Series
Technical Data**

◆ **Material:**

Pin (outer sleeve) : Brass, machined, CuZn38Pb2
 Plating : Tin plated : 2um/80u"nickel, 5um/200u"Tin
 Gold plated: 2um/80 u"nickel, full gold
 Insulator body(black) : Glass filled polyester UL94V-0

◆ **Electrical**

Current rating : 3 Amps/contact max.
 Insulation resistance : $\geq 10000M\Omega$ at 500VAC
 Rated voltage : 100 VRMS /150VDC

◆ **Mechanical**

Operating temperature : Gold plated: -55°C to +125°C
 -67° F to +257° F
 Tin plated: -40 °C to +105°C

◆ **Applications and features:**

- 1.The male header contacts are designed for "Sandwich application" because the pin of $\phi 0.5mm/0.050"$ can be plugged into a standard IC-contact.
- 2.3 different heights are available.
- 3.Low profile type..
- 4.Side and end stackable.
- 5.Twist free construction.

◆ **Environmental data**

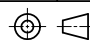
Solderability (IEC 60068-2-20. Ta) :235° C, 2s
 Resistance to soldering heat (IEC 60068-2-20. Tb) :
 -Through hole mount components :260° C, 10s

SB - XX 0 0 X 0 0 0 0 0 G △

No.of contacts : 01p ~ 40p

pin plated: Code Pin plated
 0 Tin 200u"
 1 Gold flash
 2 Gold 10u"
 3 Gold 30u"

Contact	Dim A	Dim B	Contact	Dim A	Dim B	Contact	Dim A	Dim B
01	2.54	—	15	38.10	35.56	29	73.66	71.12
02	5.08	2.54	16	40.64	38.10	30	76.20	73.66
03	7.62	5.08	17	43.18	40.64	31	78.74	76.20
04	10.16	7.62	18	45.72	43.18	32	81.28	78.74
05	12.70	10.16	19	48.26	45.72	33	83.82	81.28
06	15.24	12.70	20	50.80	48.26	34	86.36	83.82
07	17.78	15.24	21	53.34	50.80	35	88.90	86.36
08	20.32	17.78	22	55.88	53.34	36	91.44	88.90
09	22.86	20.32	23	58.42	55.88	37	93.98	91.44
10	25.40	22.86	24	60.96	58.42	38	96.52	93.98
11	27.94	25.40	25	63.50	60.96	39	99.06	96.52
12	30.48	27.94	26	66.04	63.50	40	101.60	99.06
13	33.02	30.48	27	68.58	66.04			
14	35.56	33.02	28	71.12	68.58			

ANYTEK				CUSTOMER COPY			
ALL RIGHTS RESERVED. REPRODUCTION OR ISSUE TO THIRD PARTIES IN ANY FORM WHATSOEVER IS NOT PERMITTED WITHOUT WRITTEN AUTHORITY FROM THE PROPRIETOR. PROPERTY OF ANYTEK TECHNOLOGY CO., LTD.							
TITLE	SB-Single row IC sockets Adapter pin10.0mmL Series						
PART NO.	SBXX00X00000G			DWG NO.	8SB0101		
APPROVED	CHECKED	DESIGNED	DRAWN	CUST NO.	Tolerance		
		Aaron 2006.02.18	Aaron 2006.02.18		X. ±0.50		
					UNIT: mm		X.X ±0.30
					SCALE: NONE		X.XX ±0.10
SHEET: 01/01					REV.: C		X* ±1*