


| SIGN | DATE | DESCRIPTION | APPROVER |
|------|----------|---|----------|
| △ | 8/07'06 | Added FIMKO standard | 梁仁松 |
| △ | 01/18'07 | Soldering temperature changed from 245° to 250° | Tason |
| △ | 01/18'07 | Part NO is Changed | Tason |
| △ | 12/28'09 | The shape of digging hole is Changed | Aaron |

THIS IS CAD DRAWING, DO NOT REVISE MANUALLY!!!

Material:

- Item 1 Terminal housing :Thermoplastic (UL 94V-0)
- Item 2 Clamp : Brass ,Ni plated
- Item 3 Wire guard solder pin : Brass ,Tin plated
- Item 4 Terminal screw: Steel Zinc plating"- "slot type

△ Electrical cULus/FIMKO

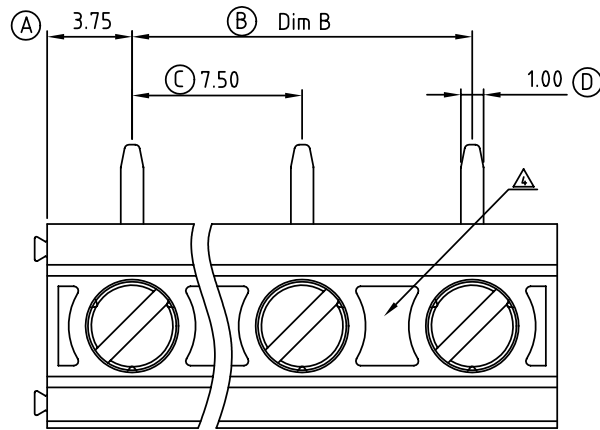
- Voltage rating: 300VAC/300VAC
- Current rating: 16A/17.5A
- Wire range: 1.5mm²
- Solid wire(AWG): 12-28
- Stranded wire(AWG): 12-28
- Torque: 3.5Lb-In./0.5Nm
- Screw: M3
- Wire strip length: 6-7mm
- Withstanding Voltage: 1.6KV/2.5KV
- Operating temperature: -40°C to +115°C
- Soldering temperature: 250°C±10°C/5 Sec
- Safety Approval: 

△ VI xx 41 x 0 xxxx G

02 2 CONTACTS
03 3 CONTACTS
...
16 16 CONTACTS

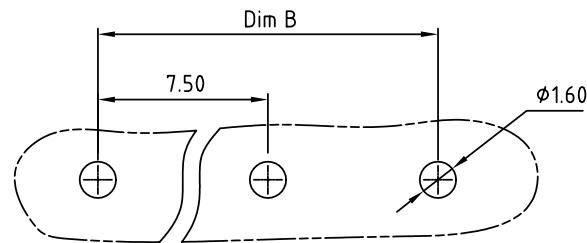
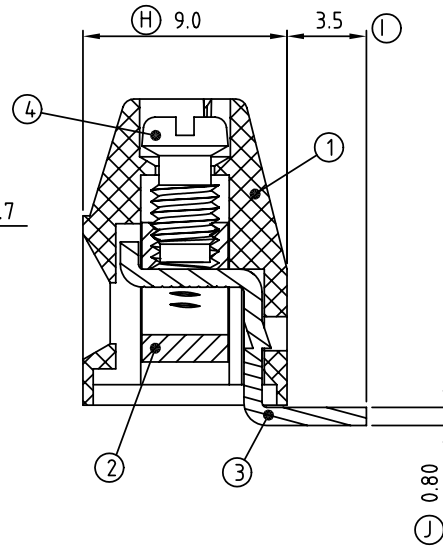
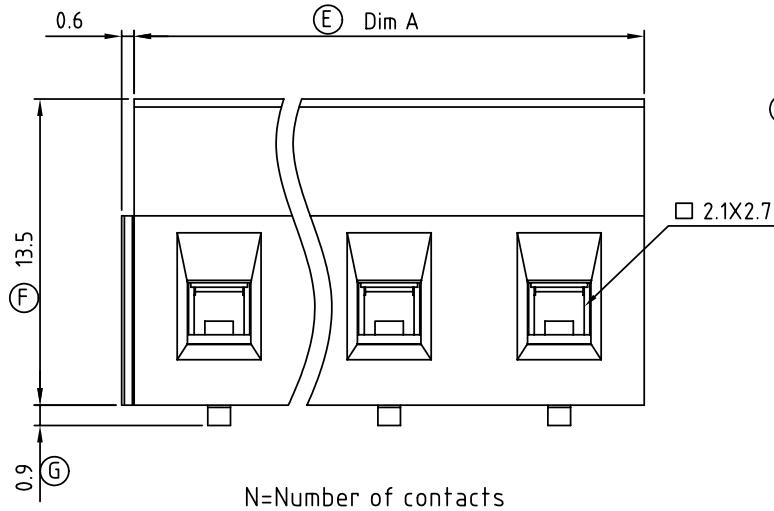
0 Black
5 Green
(RAL 6018/T)
6 Blue
8 Grey
(RAL 7035/D)

0000:"@ "Logo (Standard)
000A:"ANYTEK" Logo
Any special item by
customer request,
please contact sales
department.
Pb < 40,000ppm
(RoHS)



| DIMENSION | | Poles | Tolerance |
|-----------|-----------|---------|-----------|
| Dim A | N×7.5 | 2p-6p | ±0.15 |
| Dim B | (N-1)×7.5 | 7p-12p | ±0.25 |
| | | 13p-16p | ±0.35 |

N=Number of contacts



P.C.B LAYOUT

ANYTEK

CUSTOMER COPY

ALL RIGHTS RESERVED. REPRODUCTION OR ISSUE TO THIRD PARTIES IN ANY FORM WHATSOEVER IS NOT PERMITTED WITHOUT WRITTEN AUTHORITY FROM THE PROPRIETOR. PROPERTY OF ANYTEK TECHNOLOGY CO., LTD

| TITLE | | VI 7.5 SERIES 90° wire inlet | | DWG NO. | | 8VI0202 | |
|----------|---------|------------------------------|------------|--------------|--|------------|--|
| PART NO. | | VIxx41x0xxxxG | | DWG NO. | | 8VI0202 | |
| APPROVED | CHECKED | DESIGNED | DRAWN | CUST NO. | | Tolerance | |
| | | Aaron | 熊海燕 | | | X. ±0.50 | |
| | | 2009.12.28 | 2007.01.18 | | | X.X ±0.30 | |
| | | | | SHEET: 01/01 | | X.XX ±0.10 | |
| | | | | | | X° ±1° | |